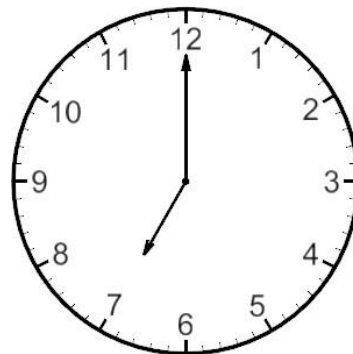


Today, we are going to be practising telling the time on both a digital and an analogue clock.



Digital clock

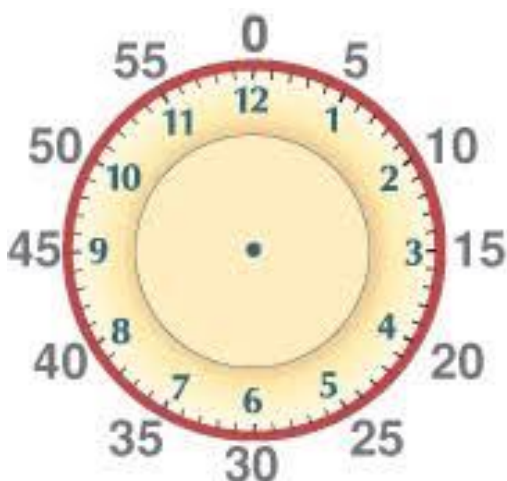


Analogue clock

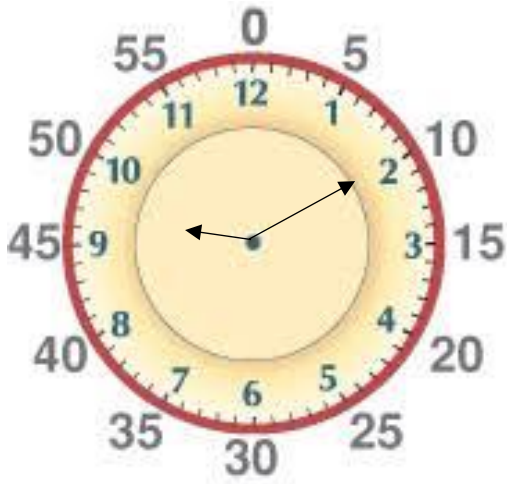
Both clocks show the time is 7 o'clock. The digital clock shows that it is 07:00am (morning) whereas with the analogue clock, we can't be sure whether it is morning or evening.

A digital clock uses numbers to show the time. The 12-hour **clock** runs from 1am to 12 noon and then from 1pm to 12 midnight. The 24-hour **clock** uses the numbers 00:00 to 23:59 (midnight is 00:00). So, on a 24-hour digital clock, you can tell whether the time is in the morning or in the evening. Today, we are just looking at 12-hour clocks. Something very important to remember when we write the digital time is we must make it 4 digits long and include (am) or (pm). For example, a digital clock shows 09:30am not 9:30.

An analogue clock uses hands to show the time. It has two hands, one short, one long. The long hand shows you how many minutes past/ to the hour it is. The short hand points to the hour. With an analogue clock, you can't tell whether the time is showing 7 o'clock in the morning or 7 o'clock in the evening.

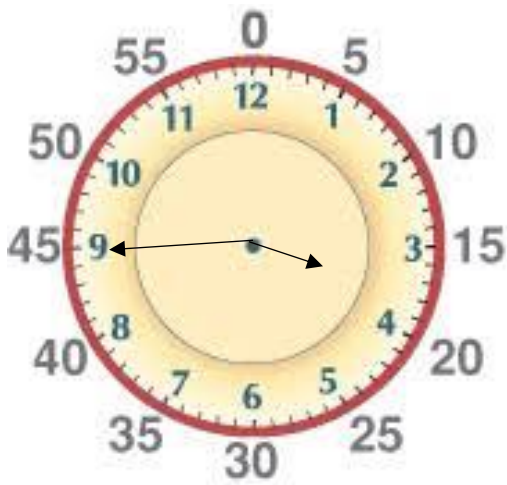


Remember, the big hand on an analogue clock points at the minutes. Look at the numbers around the outside of the clock (5, 10, 15, 20, 25, 30, 35, 40, 45, 50, 55, 0). If a big hand is pointing at one of these numbers, that's how many minutes it is past the hour. Let's look at an example.



The school day has just begun. The big hand (minute hand) on this clock is pointing at the 10. The small hand (hour hand) is pointing just past the 9. This means that it is 10 minutes past 9. If we convert this time to a digital clock, we would write it as 09:10am.

Don't forget to make sure your digital time always has four digits!



You've just got home from school. The big hand (minute hand) on this clock is pointing at the 45. The small hand (hour hand) is pointing just before the 4. IT HAS NOT YET REACHED THE 4. Therefore, it is still in the section of 3 o'clock, not 4 o'clock.

The time shown is 03:45pm. Even though the small hand is closer to the 4 and we would say, "It is quarter to four," it is still written as 03:45pm as we have not yet stepped over into 4 o'clock.

Match the analogue times to the digital times below:



05:57pm

11:08am

03:45pm



The time is _____ past 10

This can also be written as ____ minutes past 10

The digital time is ____ : ____

Write each of these times in the digital format.



Record the time of each activity in digital format.

Netball		p.m.	
Football		a.m.	
Rock climbing		p.m.	
Roller disco		a.m.	

Alfie looks at his digital watch and sees this time.
What could he be doing at this time?

01:00 p.m.

Annie converts the analogue time to digital format.
Here is her answer.



22 : 02

Explain what Annie has done wrong.
What should the digital time be?

12 : 21

On a 12 hour digital clock, how many times will the time be read the same forwards and backwards?

Jack arrives at the train station at the time shown in the morning.

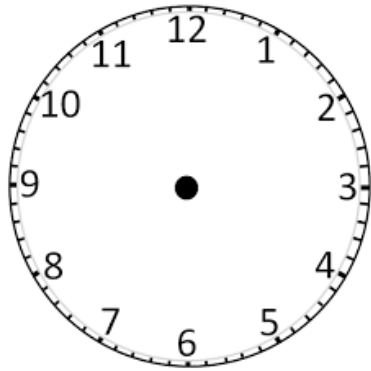


Which trains could he catch?

Destination	Departs
York	07 : 10 a.m.
New Pudsey	09 : 25 a.m.
Bramley	09 : 42 a.m.
Leeds	10 : 03 a.m.

How long will Jack have to wait for each train?

I would like you to draw 5 different analogue clock faces by drawing around something circular. Don't make them too big as you need to fit 5 on one page. Next to each clock draw a rectangle for a digital clock, your page should look like mine.



Now, create 5 different times on the analogue clock and match it with what it would be on the digital clock. Remember, big hand is minutes, little hand is hour.

