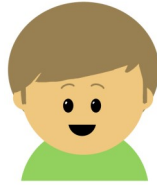


Deepening Understanding - Always, Sometimes or Never?

Year 4: Fractions, Decimals and Percentages

Always, Sometimes or Never?

Jerry says, "One-third is one of three pieces."



Always, Sometimes or Never?

50% of a number is bigger than 10% of a number.

Always, Sometimes or Never?

You can order fractions with the same denominator by just putting the numerators in order.

Always, Sometimes or Never?

Marlon believes, "Decimals can be represented as Roman numerals."



Always, Sometimes or Never?

Millie states, "A fraction with 5 as the numerator is more than 1."



Always, Sometimes or Never?

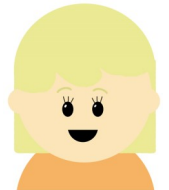
In a fraction, the numerator can't be bigger than the denominator.

Always, Sometimes or Never?

The bigger the denominator, the more you have.

Always, Sometimes or Never?

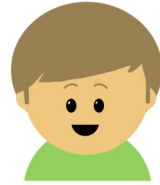
"Hundredths are bigger than tenths," claimed Jane.



Deepening Understanding - Always, Sometimes or Never?

Year 4: Fractions, Decimals and Percentages Answers

Always. When you divide a shape into three pieces, one of those pieces is one from a total of three pieces. This is known as one-third.



Sometimes. It depends upon the value of the numbers you are finding the percentage of. 50% of 100 is 50 and 10% of 100 is 10 so 50% would be bigger. However 50% of 10 is 5 while 10% of 100 is 10 so in this case 10% of a number would be bigger.

Always. To order fractions with like denominators, look at the numerators and compare them.

Never. Roman numerals are not a place-value system; there is no "place" for a decimal point.



Sometimes. It depends on what value the denominator is. E.g. $\frac{5}{4}$ is more than one but $\frac{5}{6}$ is less than one.



Never. It is possible to have an improper fraction where the numerator is greater than or equal to the denominator.

Never. Fractions with larger denominators have more pieces that are possible. When you have more pieces that are possible in the same space, the pieces have to be smaller. If the number of pieces (numerator) in each fraction is the same, the one with the larger denominator will always be less than the other.

Never. The tenths column is the biggest in value after the decimal point.

