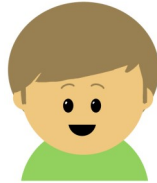


Deepening Understanding - Always, Sometimes or Never?

Year 4: Shape

Always, Sometimes or Never?

Jerry says, "A pyramid has an even number of edges."



Always, Sometimes or Never?

A rectangle has exactly three right angles.

Always, Sometimes or Never?

Squares have two diagonals which meet at right angles.

Always, Sometimes or Never?

Marlon believes, "There are 180° in a right angle."



Always, Sometimes or Never?

Millie states, "A triangle has at least one line of symmetry."



Always, Sometimes or Never?

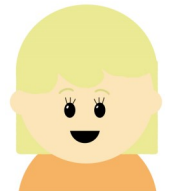
A 7cm by 7cm square has the same perimeter as a 9cm by 5cm rectangle.

Always, Sometimes or Never?

There are no shapes with exactly one right angle.

Always, Sometimes or Never?

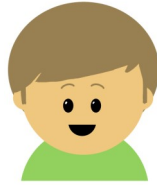
"All three sides of a triangle have the same length," claimed Jane.



Deepening Understanding - Always, Sometimes or Never?

Year 4: Shape Answers

Always. A pyramid has eight edges. Eight is an even number.



Never. Rectangles have 4 right angles of 90° each which total 360° .

Always. The diagonals of a square bisect each other and meet at 90° .

Never. A right angle has 90° .



Sometimes. An equilateral has 3 lines of symmetry, an isosceles has two lines of symmetry but a scalene triangle does not have any lines of symmetry.



Always. The perimeter of the square is $7 \times 4 = 28\text{cm}$ while the perimeter of the rectangle is $(9 \times 2) + (5 \times 2) = 28\text{cm}$. The perimeter is the same.

Never. There are shapes with one right angle - a right angled triangle.

Sometimes. An equilateral triangle has sides of the same length whereas other triangles have a maximum of two sides the same length.

