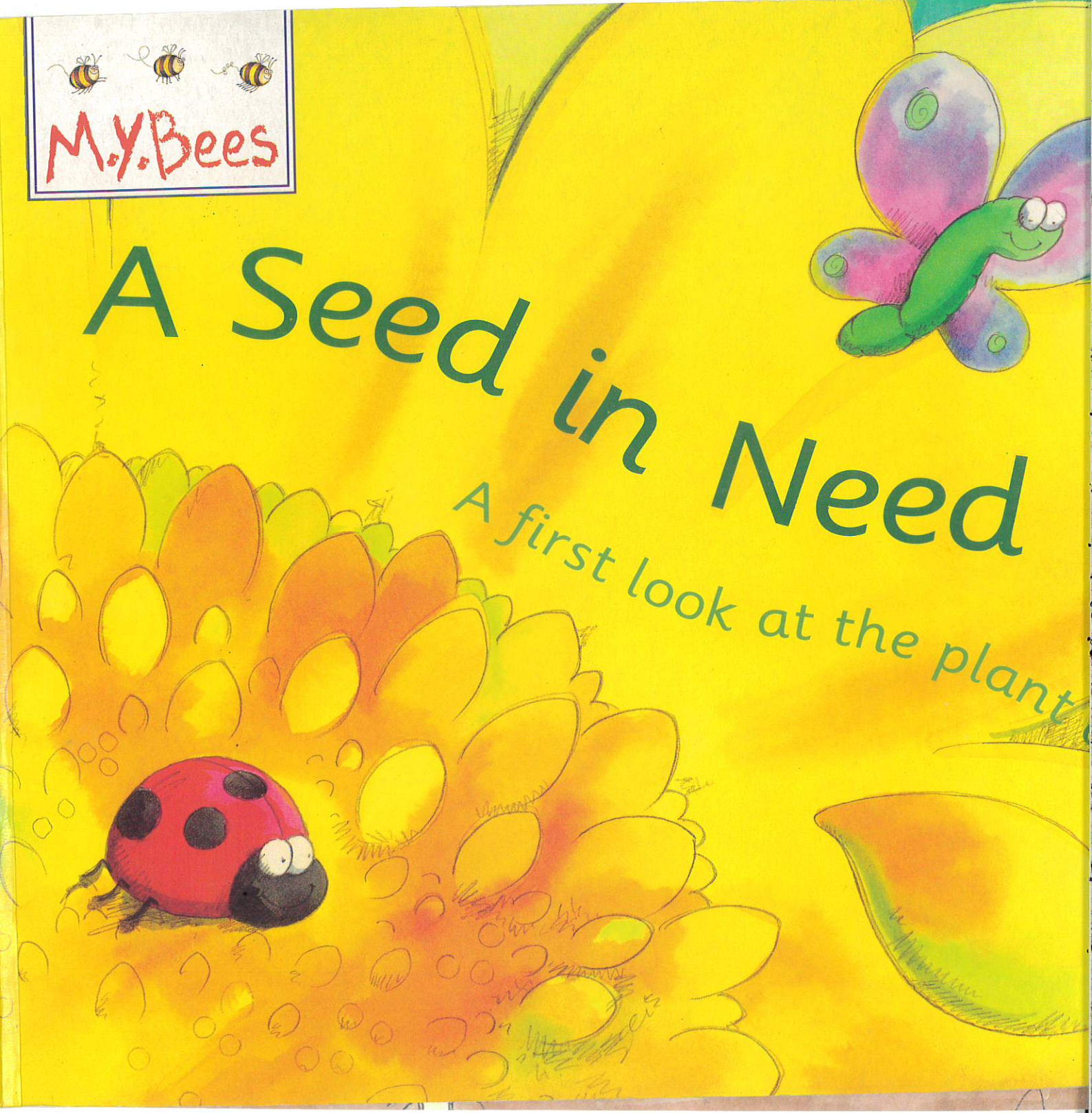
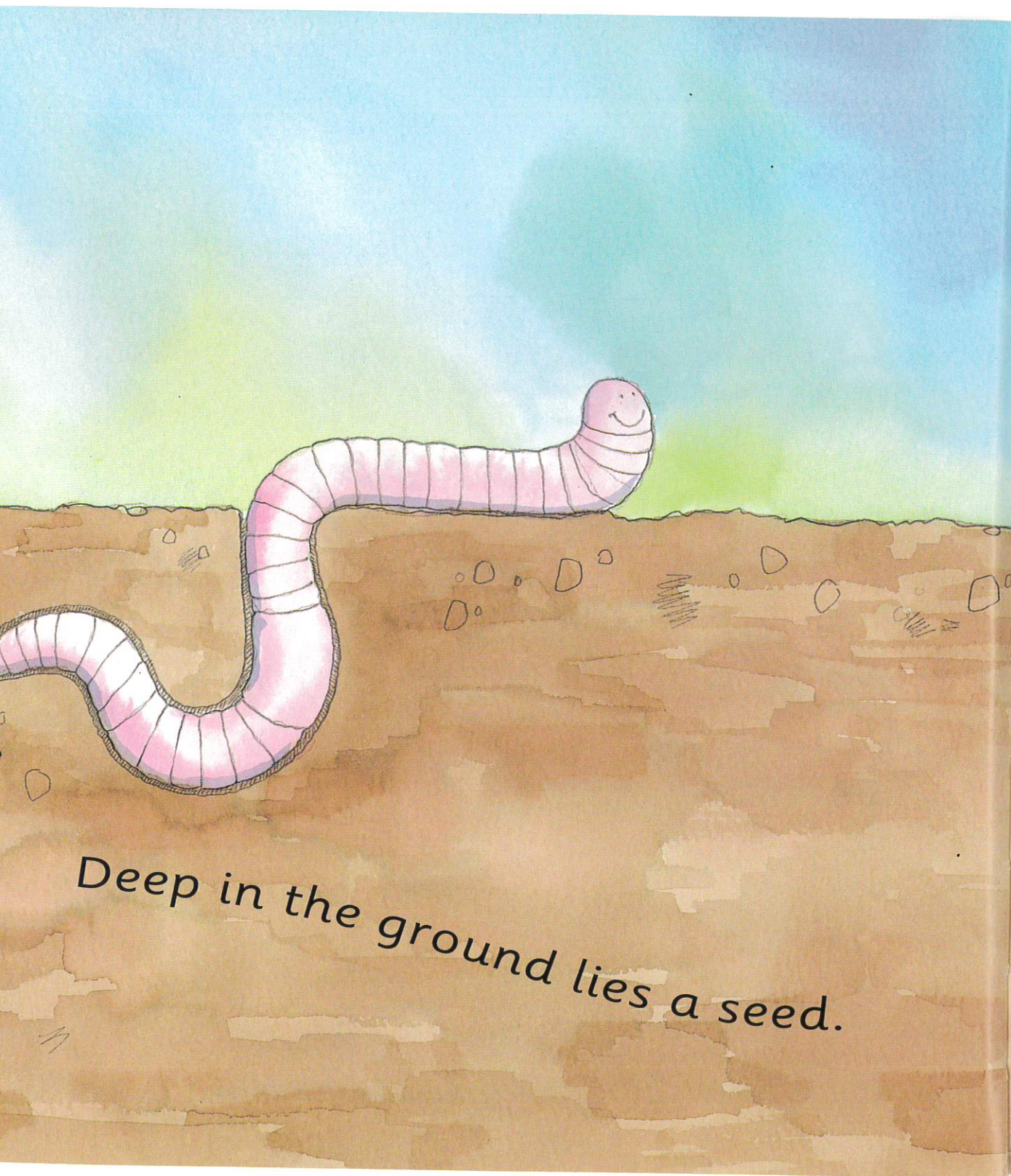


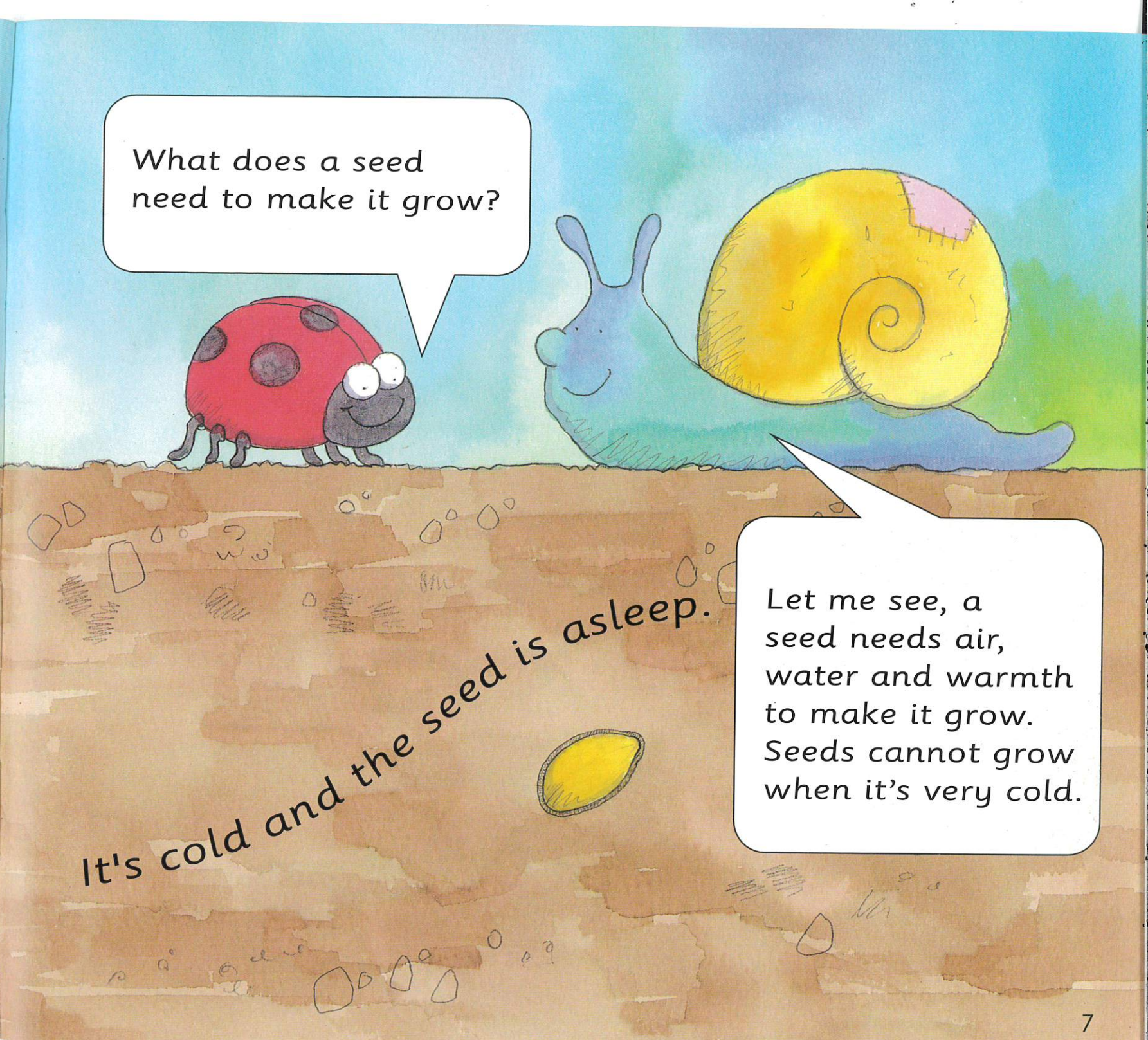
A Seed in Need

A first look at the plant





Deep in the ground lies a seed.



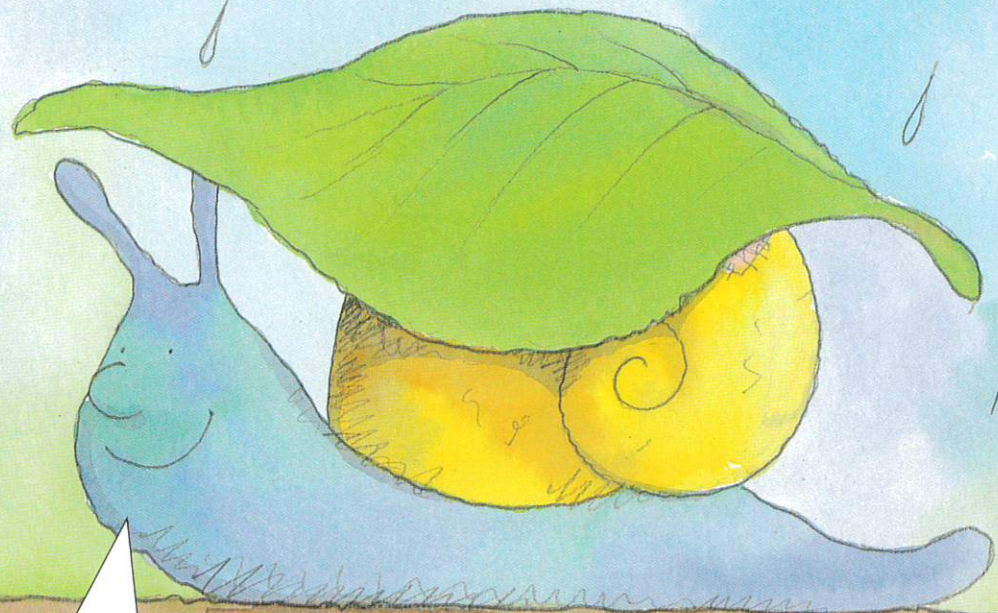
What does a seed need to make it grow?

It's cold and the seed is asleep.

Let me see, a seed needs air, water and warmth to make it grow. Seeds cannot grow when it's very cold.

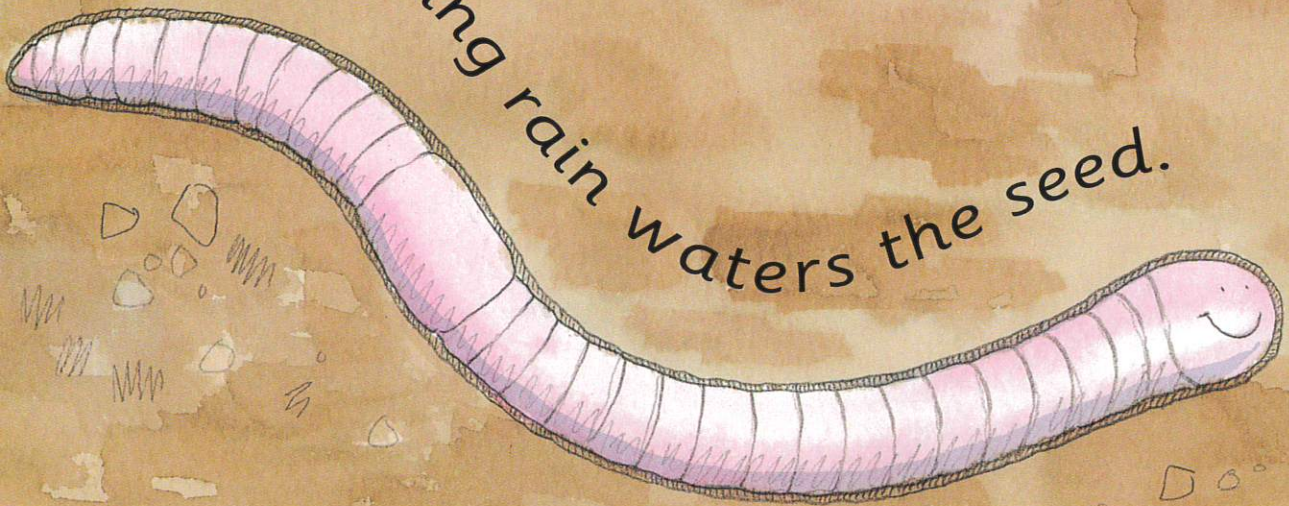


So the rain and the sunshine help many plants to grow in spring.



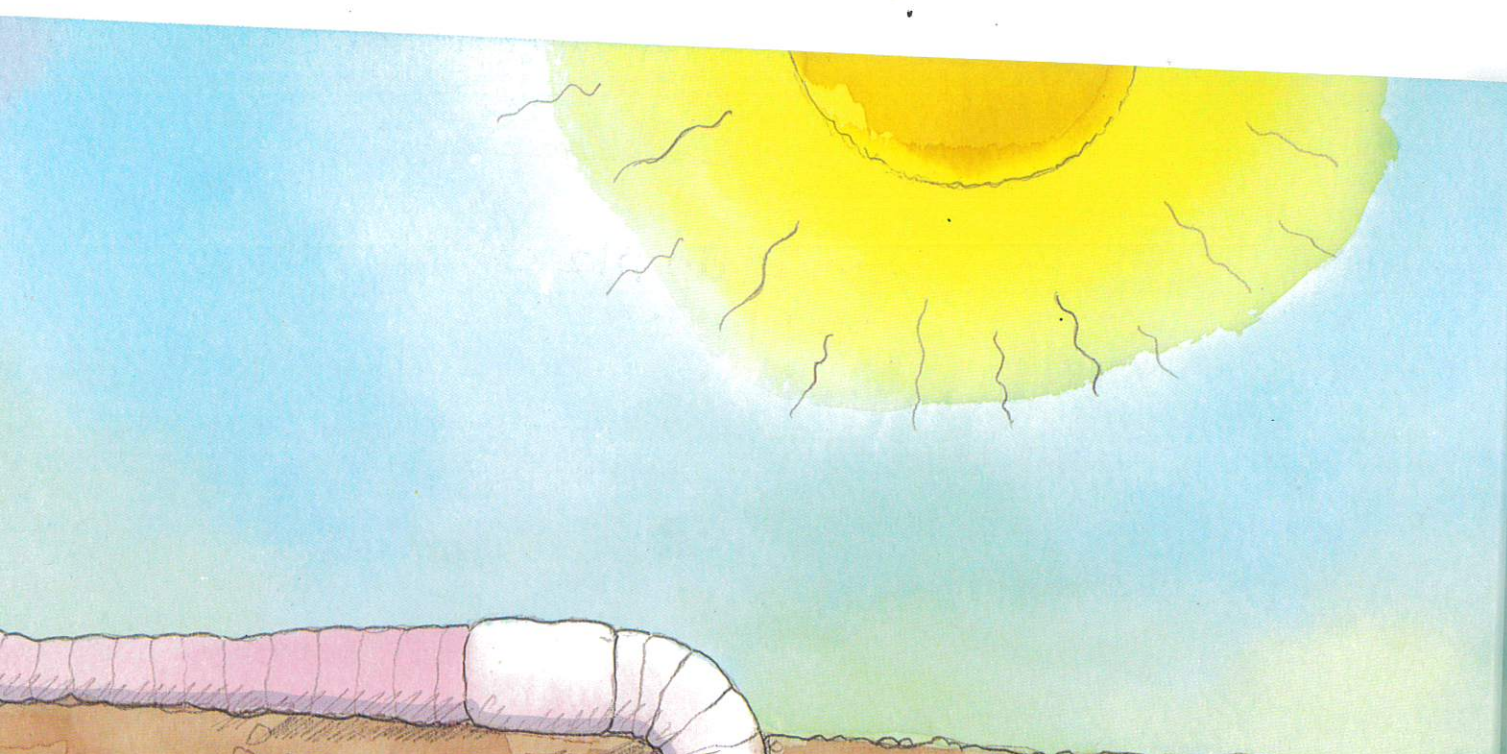
That's right.

In spring rain waters the seed.

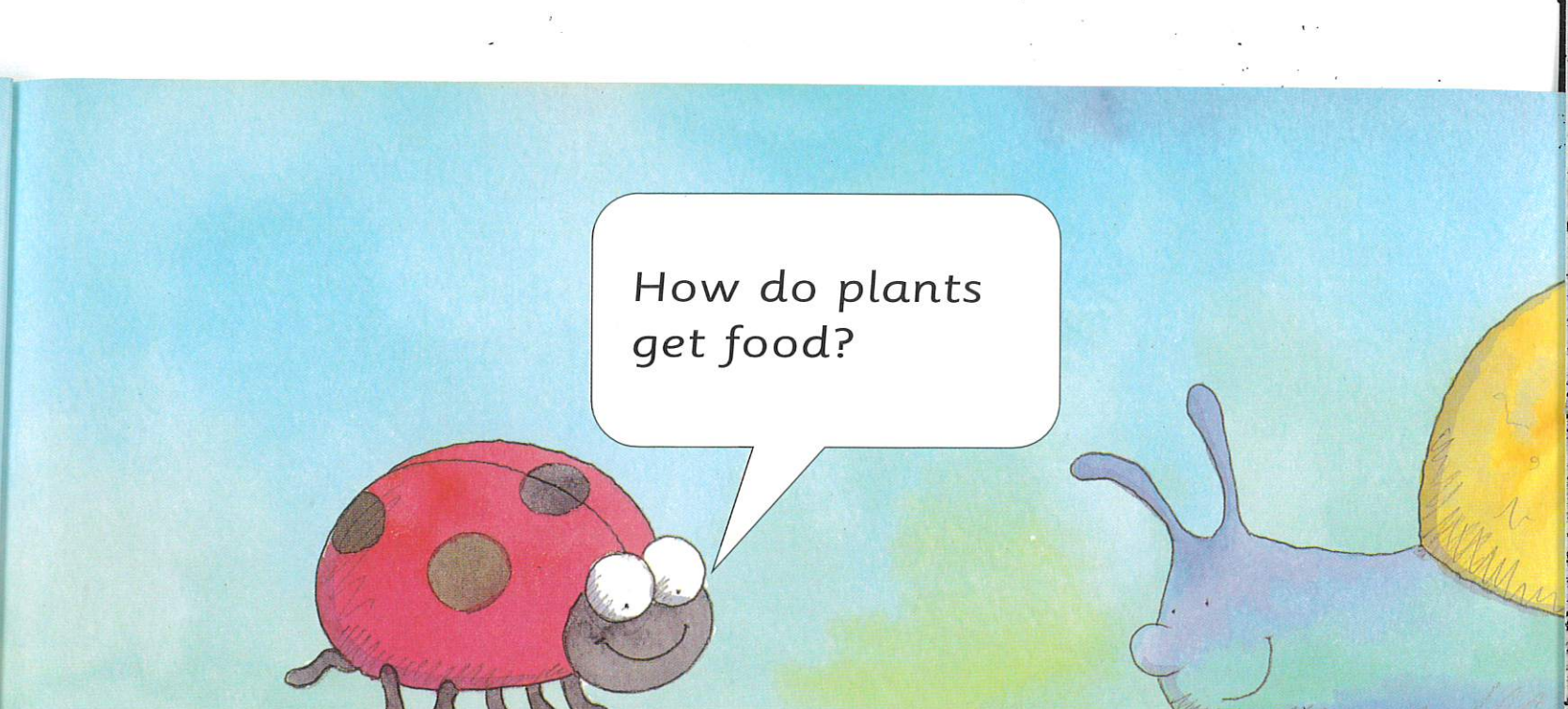


The sun warms the soil and the seed wakes up.





... appear in the seed. Roots grow from the bottom.

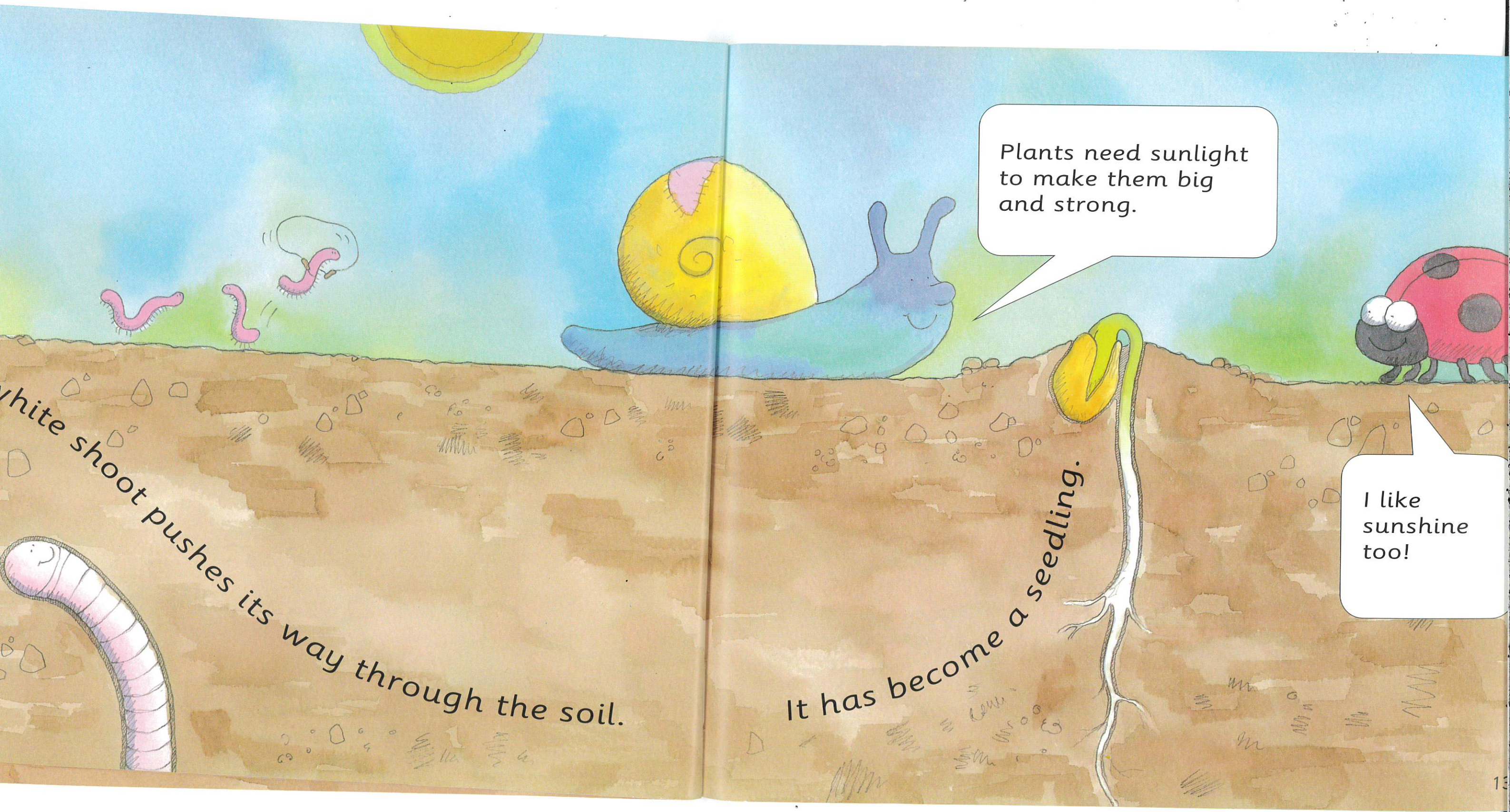


How do plants get food?



A small white shoot grows from the seed.

Plants suck food out of the soil with their roots.

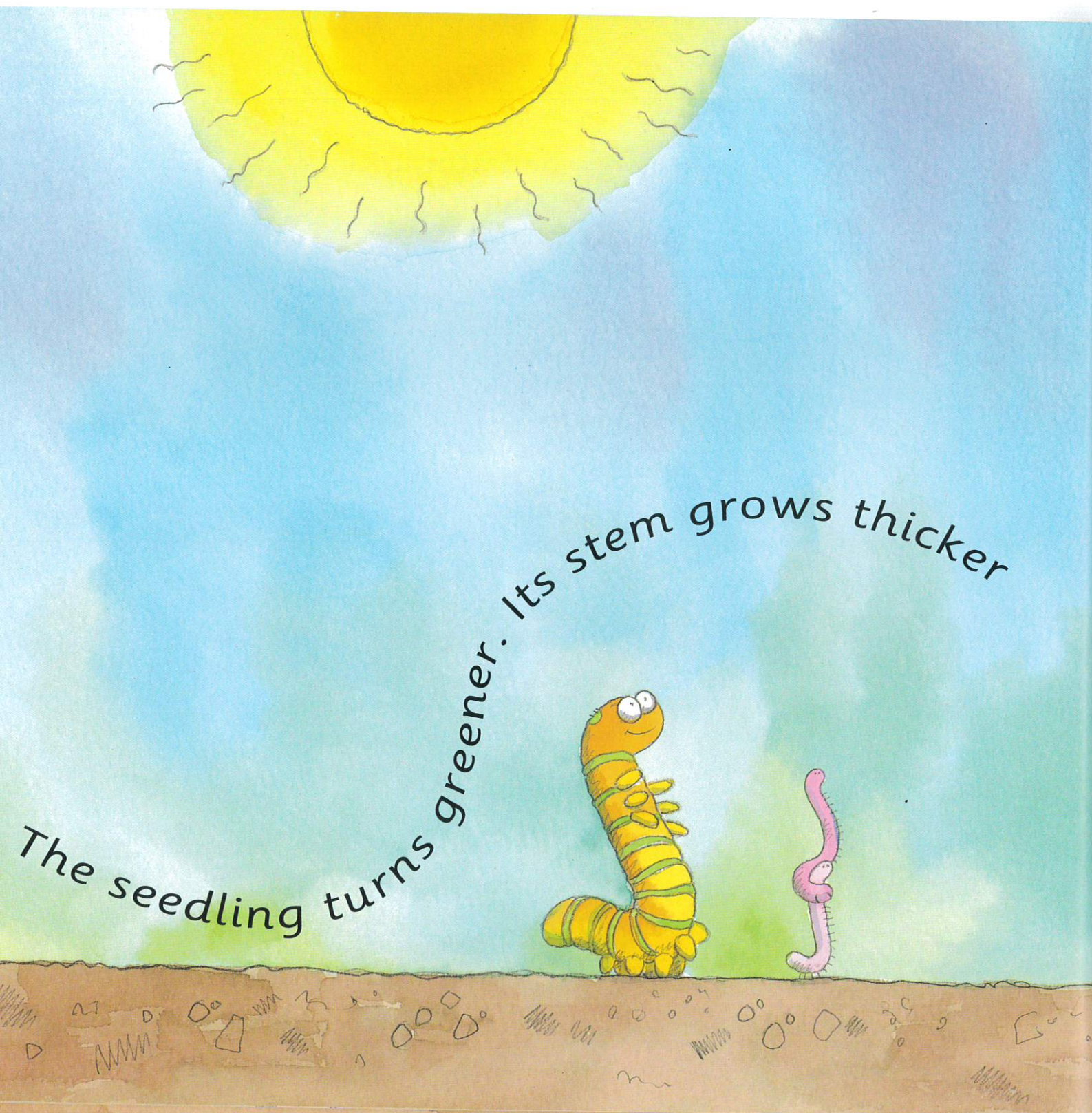


Plants need sunlight to make them big and strong.

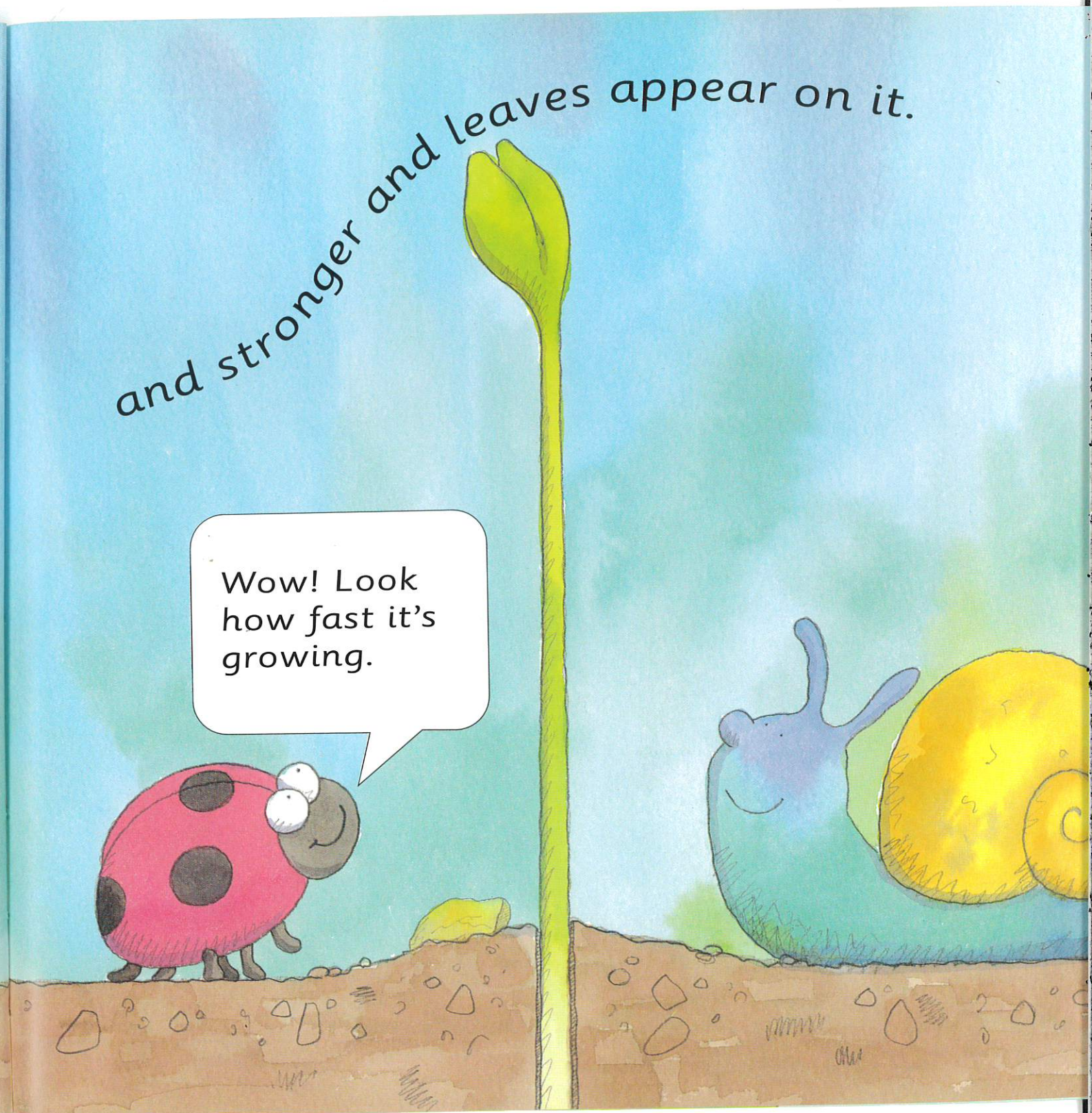
I like sunshine too!

White shoot pushes its way through the soil.

It has become a seedling.



The seedling turns greener. Its stem grows thicker



and stronger and leaves appear on it.

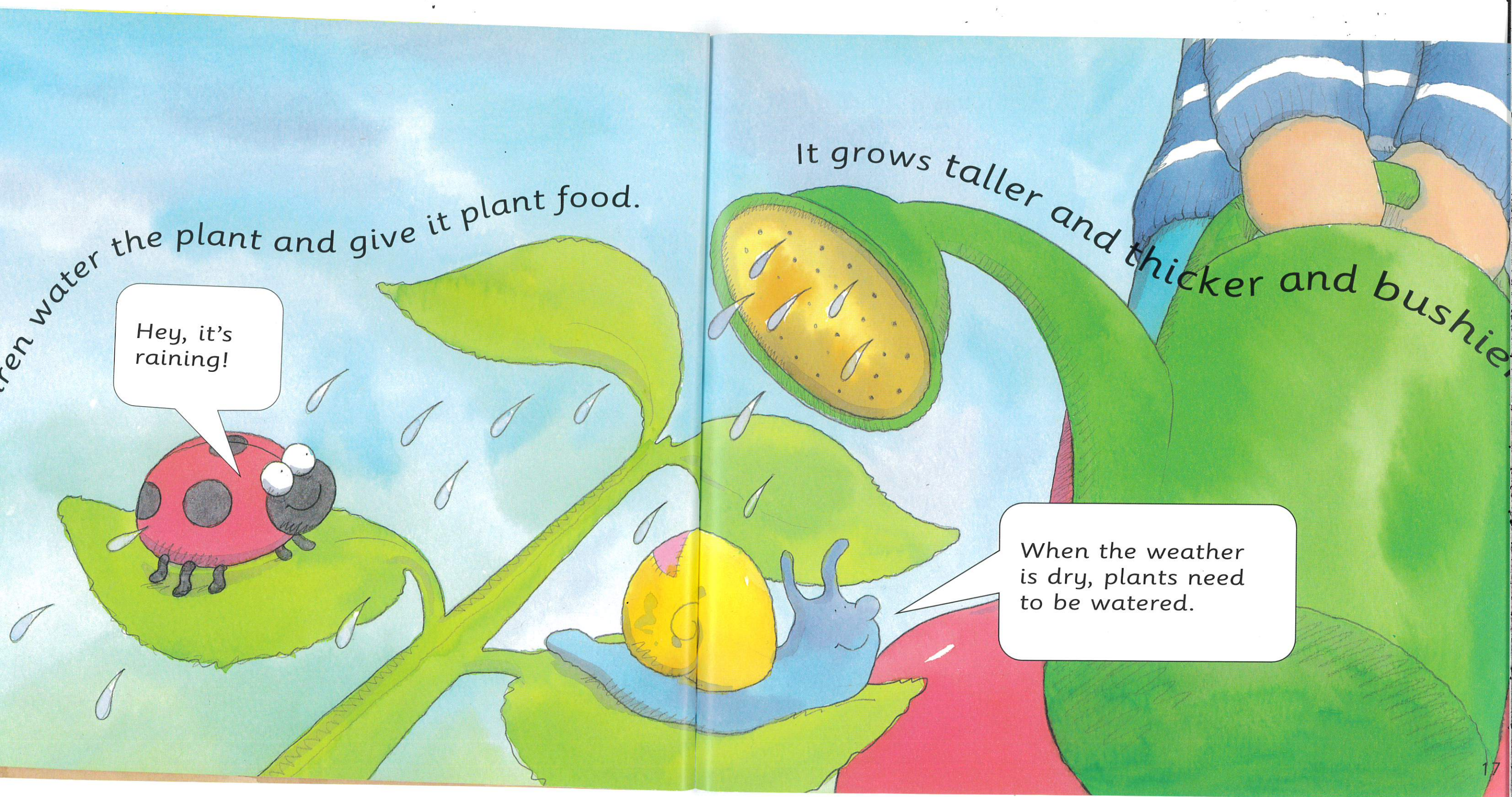
Wow! Look how fast it's growing.

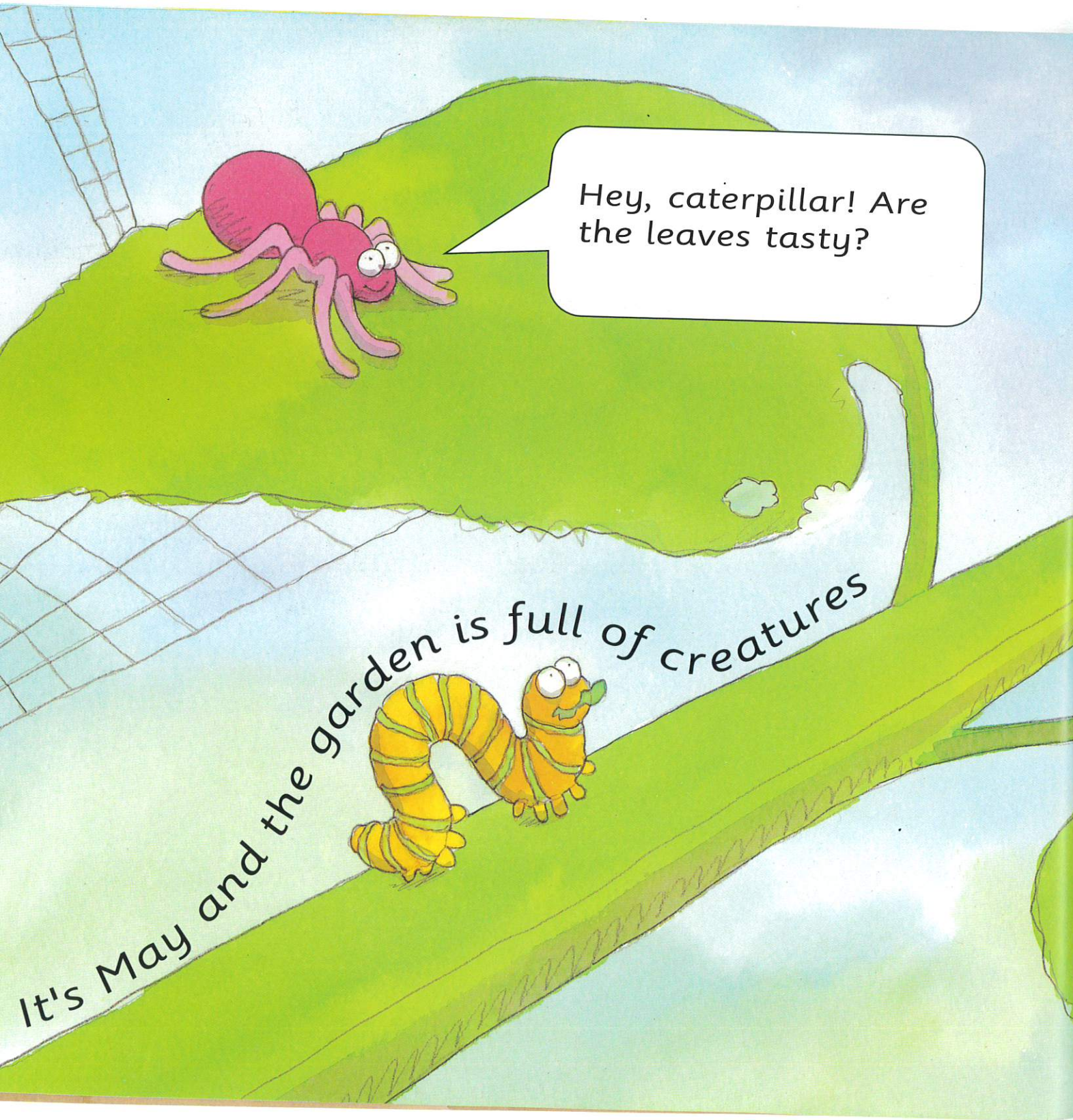
...ren water the plant and give it plant food.

Hey, it's raining!

It grows taller and thicker and bushier

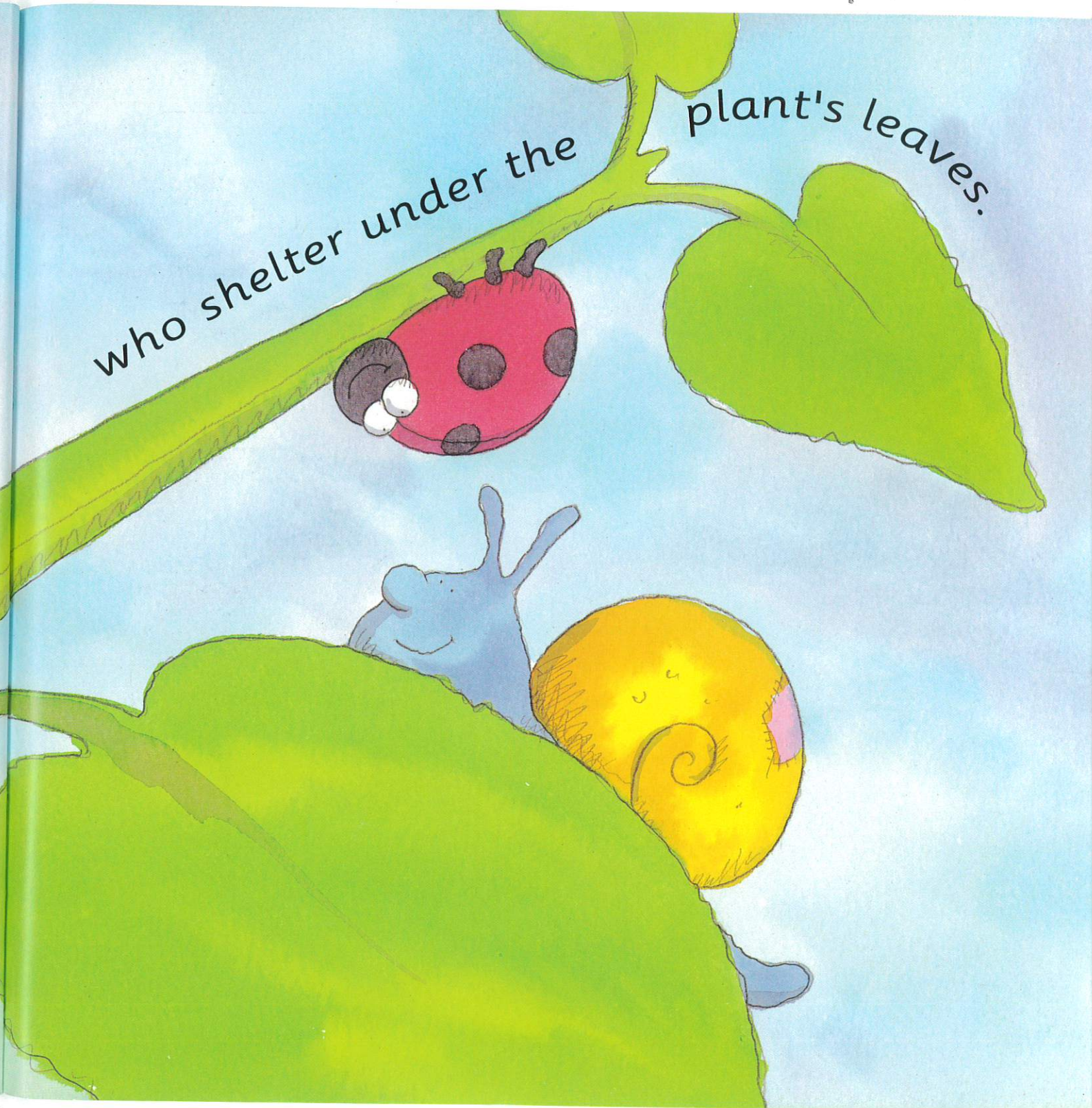
When the weather is dry, plants need to be watered.





Hey, caterpillar! Are the leaves tasty?

It's May and the garden is full of creatures



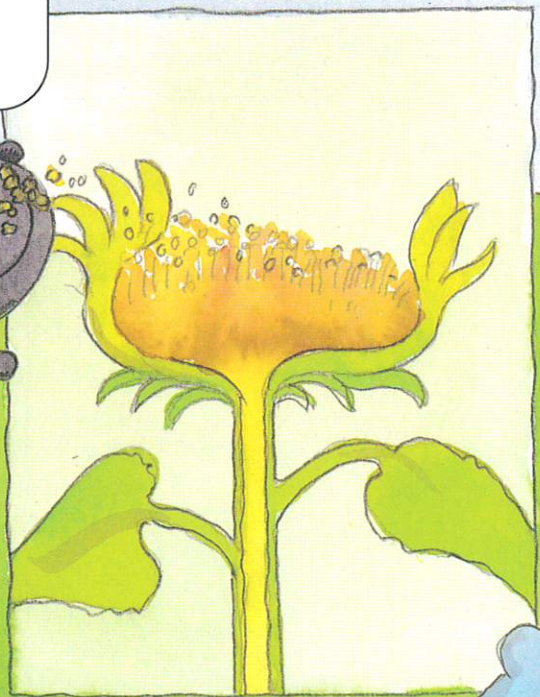
who shelter under the plant's leaves.

appears on the plant. At first it is small



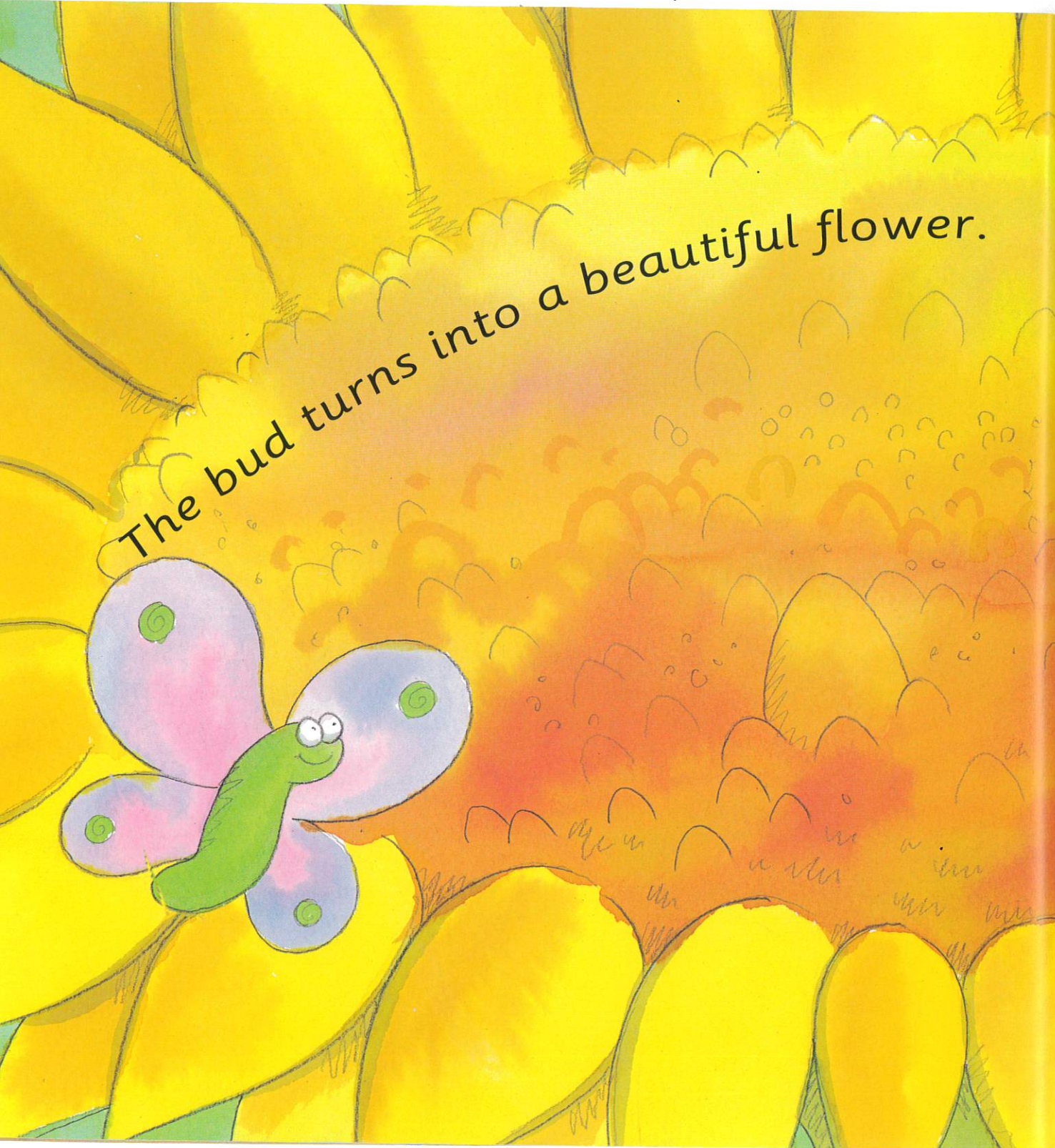
and green. But soon, it begins to unfold.

Atchoo!



Watch out! The yellow pollen dust in the middle of the flower will make you sneeze.






The bud turns into a beautiful flower.



Bees and butterflies come to visit it.



Look at the insects coming to drink nectar from the flower.



Summer is over and the flower begins to droop.

The petals fall to the ground.

Will there be any flowers left in the garden during winter?

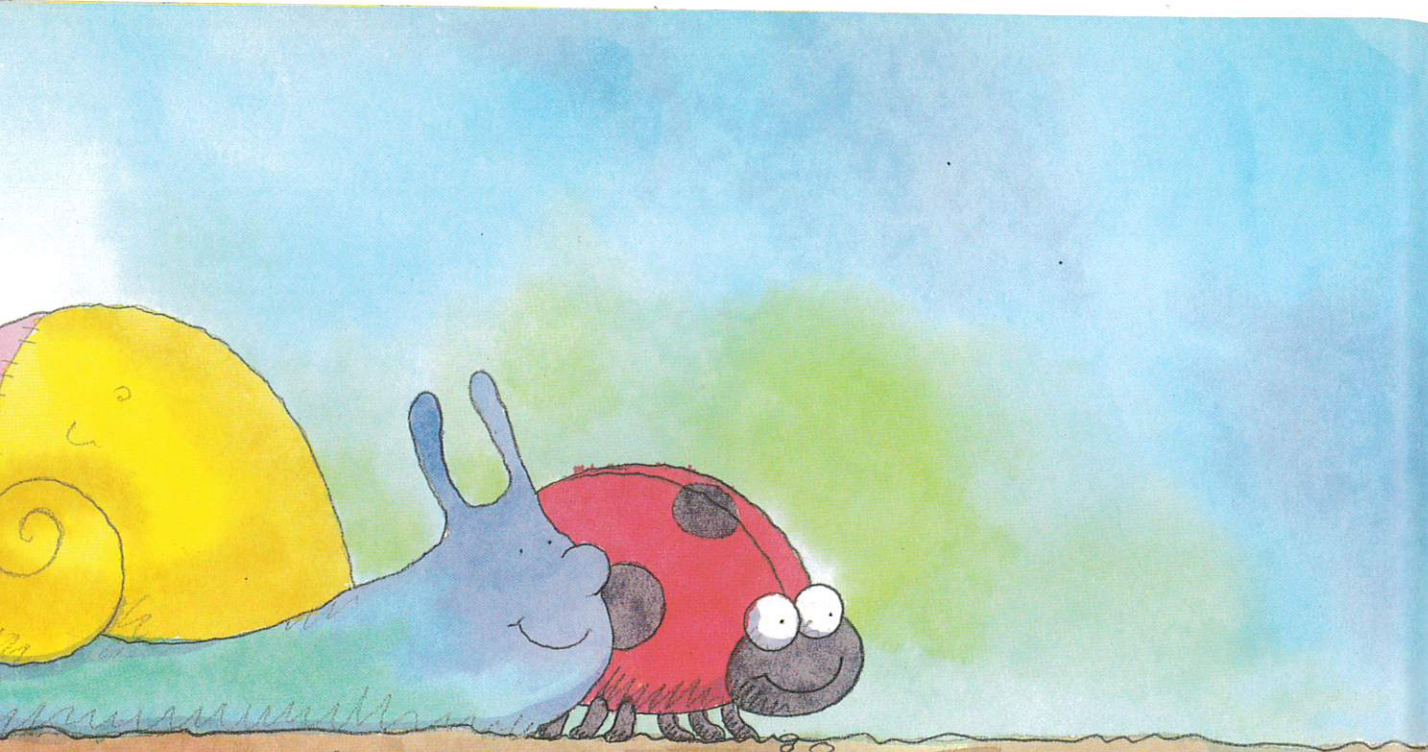
Yes, snowdrops like winter best. But most flowers grow in spring and summer.



gardener carefully collects the seeds from

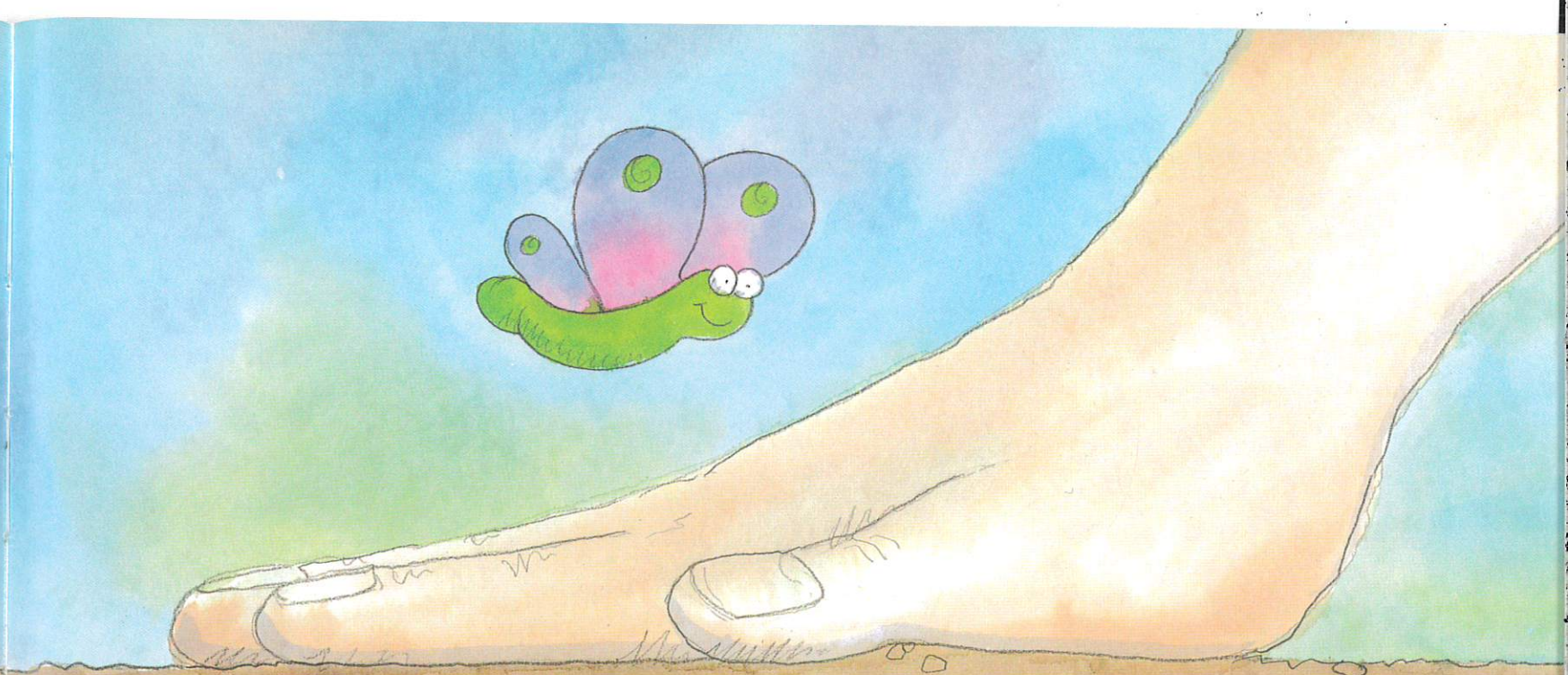
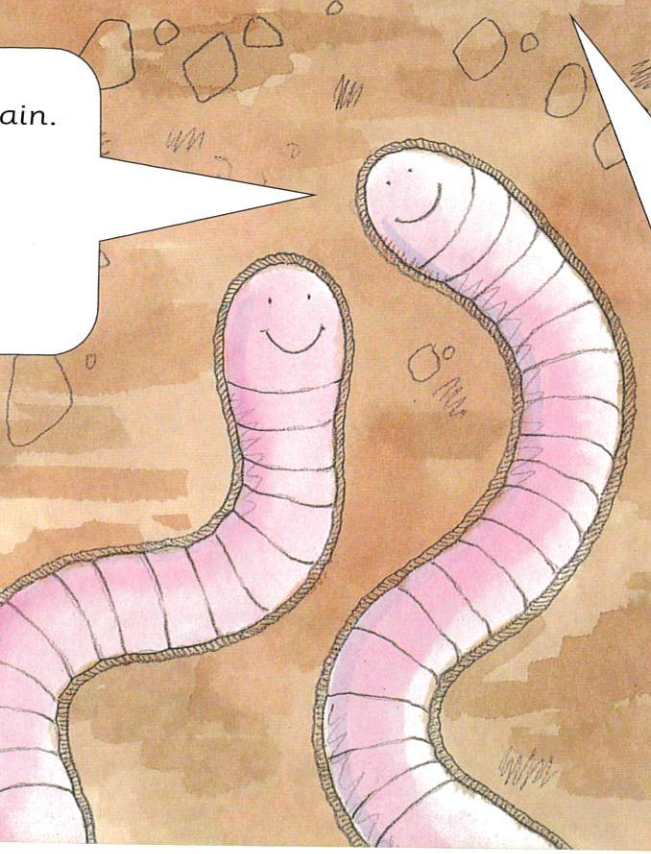
the centre of the dead flower and stores them in a tin

Not all seeds are collected by gardeners. Some seeds just fall to the ground and grow on their own next spring.

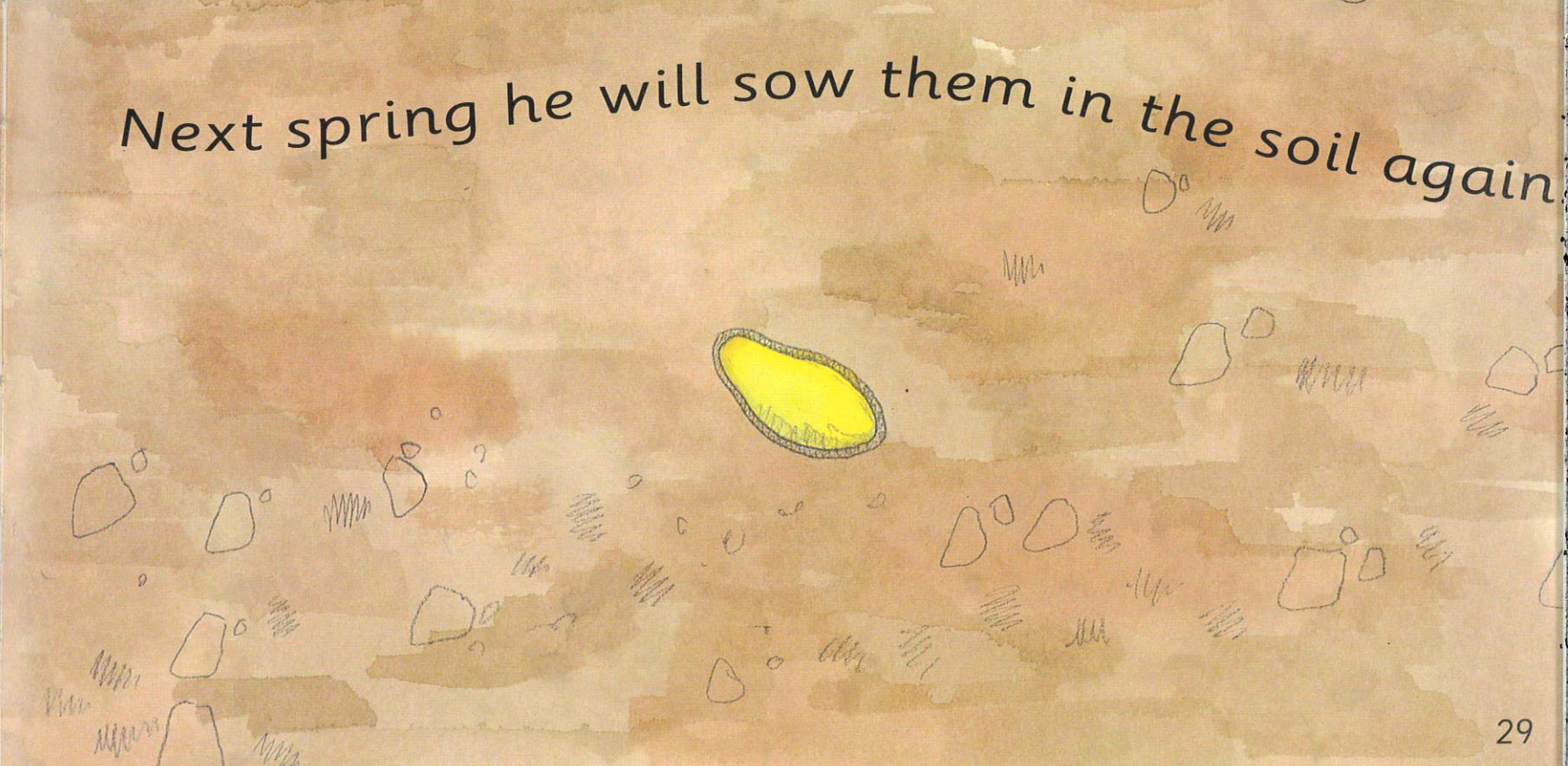


ain.

That way our garden will be full of flowers year after year after year.



Next spring he will sow them in the soil again



Useful Words

Bud

A flower that hasn't opened yet.

Seed

The small hard part of a plant from which a new plant grows.

Seedling

A very young plant.

Shoot

The white stem growing out of a seed that becomes a plant.

Juice inside a flower that bees and butterflies.

Root that helps plants grow seeds.

Ground plant that grows in the soil. Leaves help keep a plant cool.



The Sunflower

Pollen is the yellow dust found in the middle of a flower.

Insects carry pollen dust from one flower to another on their legs and wings.



Petals are the colourful parts around the middle of the flower.

Leaves capture energy from the sunlight and use it to make food for the plant.

A strong stem supports the plant.

