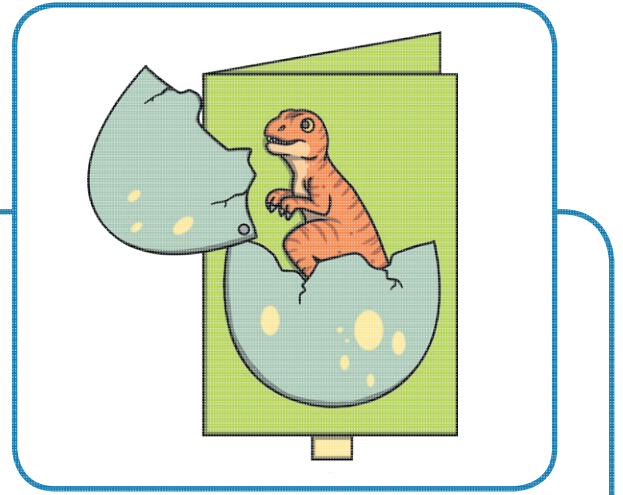


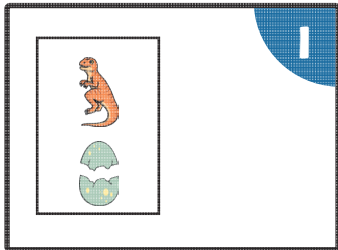
Hinge and Lever Moving Dinosaur

You will need:

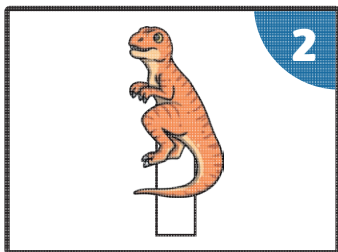
- A5 card
- sticky tape
- glue
- split pin
- dinosaur
- egg



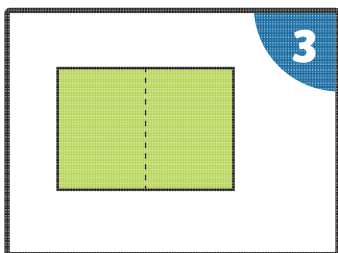
What To Do:



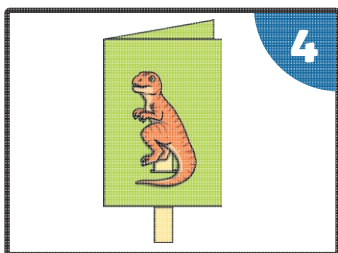
Carefully cut out the dinosaur egg and dinosaur.



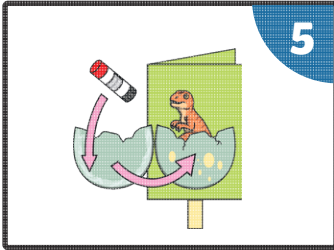
Cut out the rectangle and stick it to the back of the dinosaur.



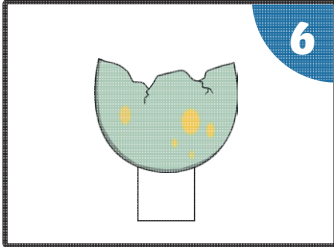
Fold the card in half but don't press down to make a sharp fold. Cut a little snip in the middle of the card so when unfolded, the hole is big enough for the rectangle to go through.



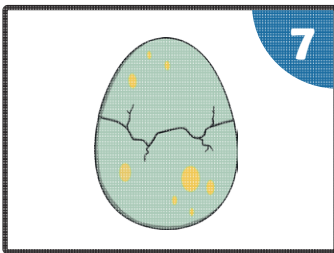
Push the rectangle through the hole, so the dinosaur is at the front and the rectangle goes through to the back.



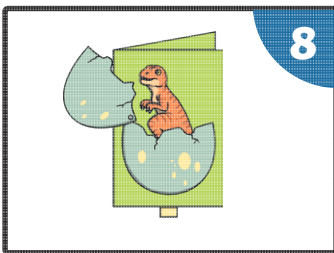
Stick the bigger part of the egg to the front of the card, but only glue along the sides and the bottom.



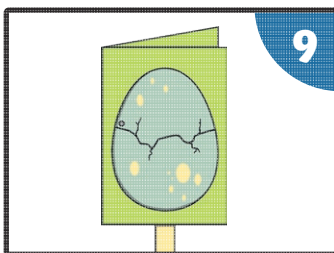
Pull the rectangle down so the dinosaur is covered by the egg.



Place the smaller part of the egg on top of the bigger part.



Carefully push the split pin through the left corner of both parts of the egg and the card. Turn the card round and separate the two parts of the split pin. You might need a grown-up for this bit.



Your dinosaur is ready to hatch from its egg!

