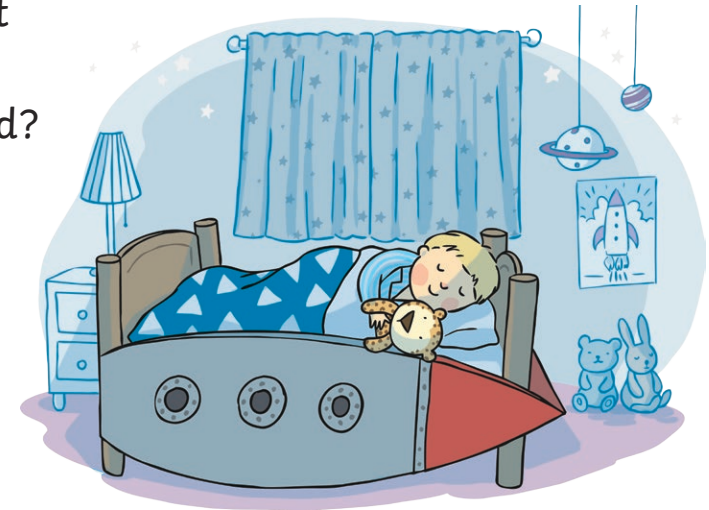


Back to Earth with a Bump Talk Cards



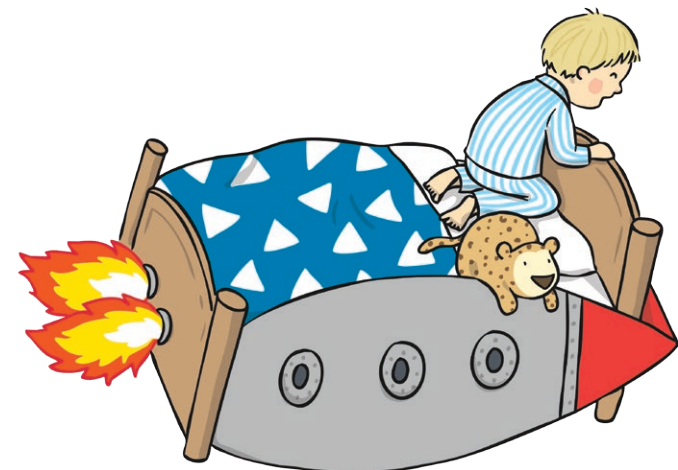
1. What time of day is it when Hal goes to bed?



2. What does Hal's bed turn into?



3. What does Mission Control ask Hal to find?





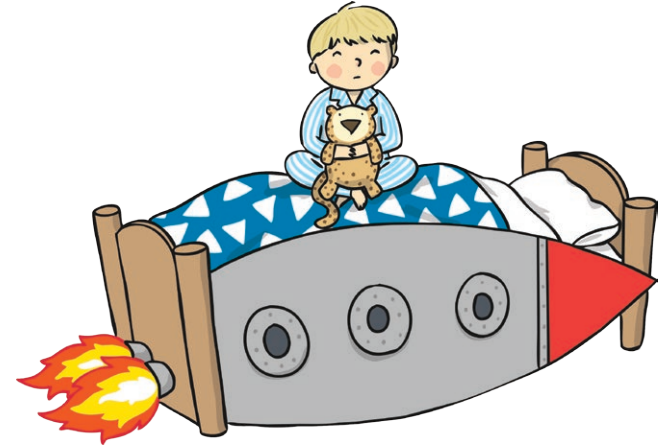
4. What were the 'small diamonds' in the sky?



twinkl.com



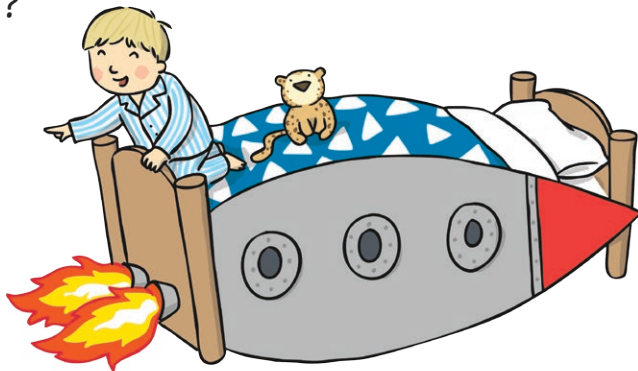
5. What does Hal do before he gets into bed?
What do you do before you get into bed?



twinkl.com



6. Which planet does Hal find next to Earth?



twinkl.com



7. What does Mars look like?



twinkl.com



8. In space, Hal finds something that has 'craters and mountains and dust that is grey.' What was it?



twinkl.com



9. What does Hal notice the Earth doing?



twinkl.com



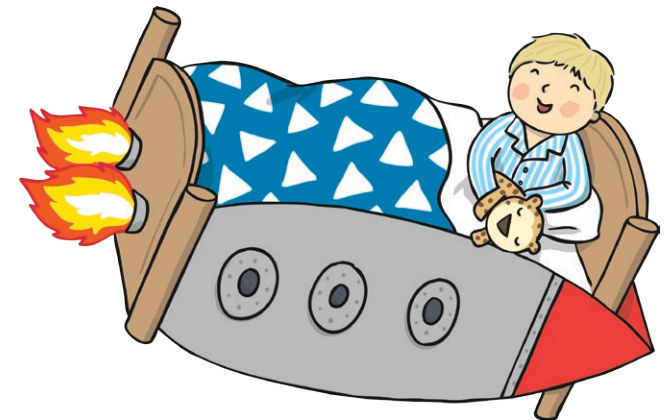
10. What words were used to describe the stars?



twinkl.com



11. What did you learn about how we have day and night in the story?



twinkl.com



12. Hal does not give up on his mission. Can you think of a time when you did not give up?



twinkl.com

Answers

1. Hal goes to bed in the evening.
2. His bed turns into a rocket or a space travelling bed.
3. The Sun
4. The stars
5. He brushes his teeth and brushes his head.
6. Mars.
7. Mars is red and it glows. There are mountains, valleys and deserts so dry.
8. The Moon

twinkl.com

Answers

9. It was moving, turning around, rotating.
10. The stars sparkle, dazzle and glow with white light. They are like small diamonds. They are beautiful, twinkling space dots.
11. We have daytime when the Earth turns towards the sun and night-time when the Earth turns away from the Sun.
12. Various answers.

twinkl.com