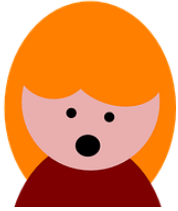


Deepening Understanding

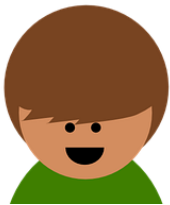
Adding and Subtracting Fractions



Jane says that...

$$\frac{1}{5} + \frac{3}{5} = \frac{4}{10}$$

Do you agree or disagree with Jane? Explain your thoughts.



Marlon says that...

$$\frac{8}{10} - \frac{5}{10} = \frac{3}{10}$$

Do you agree or disagree with Marlon? Explain your thinking.



Millie is unsure whether a more than, a less than, or an equal to sign is needed to make this correct:

$$\frac{7}{8} - \frac{4}{8} \quad \square \quad \frac{2}{8} + \frac{2}{8}$$

Explain how you would help Millie find the solution.

