



2025/2026

## Wistow Parochial C of E Primary School Prospectus

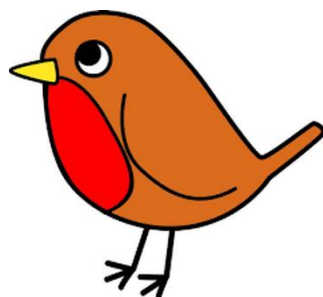


*Ofsted November 2024 - We were judged as continuing to be a 'Good' school with 'Outstanding' Personal Development.*

*'Pupils in this school are polite, well behaved and positive ambassadors for their school. They enjoy coming to school and attend well. Pupils feel safe in school and have positive relationships with adults. Pupils are proud of the work they do. Their achievements are celebrated all around the school. The school's values are embedded in all that they do.'*

*In December 2024 we were judged in a SIAMs inspection as living up to its foundation as a church school.*

*Together, we learn, grow and thrive!*



# Contents

The School Building and its Environment ..3	
Head Teacher’s Welcome.....4	
School Organisation .....5	
Staff .....5	
Governors.....7	
Our School Aims and Values .....8	
Golden Values .....8	
Our Aims .....9	
British Values .....10	
Christian Values .....10	
Our School Mascots .....12	



Our Curriculum.....	13
Early Years Foundation Stage.....	14
Key Stage 1 .....	15
Key Stage 2 .....	16
Greater Depth.....	17
Special Educational Needs.....	17
Homework Policy .....	18
Relationships and Sex Education (RSE) .....	18
Sport and PE .....	18
Instrumental Tuition .....	20
Excellence, Enrichment and Equality .	20
National Tests and Assessments.....	22

School Admissions .....	24
Pre-School Children .....	24
Midyear Admissions .....	24
Class Organisation .....	25
The School Day .....	26
Attendance .....	26
After School Provision .....	27
School Meals .....	27
Term Dates .....	28
Uniform .....	29
School Uniform .....	29
PE Kit .....	29
Leavers Hoodies.....	30
Jewellery and Hair.....	30
Make Up .....	30
Parents, School, Community and Home ..	31
ParentMail .....	31
ParentPay.....	32
FOWSA / PTA .....	32
Charging for School Activities.....	33
Transition to Secondary School.....	33
Community Links.....	34
Pupil Welfare Safeguarding Pupils .....	34
Key School Policy .....	35
Behaviour and Rewards .....	35
Photographs .....	35
Health and Safety .....	36



School Security.....	36
School Transport and Access.....	36
Internet Access.....	38
Emergency Closure Procedures.....	38
Medical Matters .....	38
Children Leaving School Premises.....	41
Leave of Absence During Term Time .....	41
General Data Protection Regulation (GDPR).....	42
Complaints Procedure .....	42
Additional Information General Policies .....	43
Contact Details.....	44

## THE SCHOOL BUILDING AND ITS ENVIRONMENT

Ours is a village school, which has been serving Wistow and the surrounding area since 1877.

The oldest part of the school building dates back to the school opening in 1877, with additions in the 1920's and 1950's. It was further re-modelled in 1993 and 2000, with a large extension added in 2004.



Over the years, we have worked hard to improve the space we have in school in a variety of ways. We have added additional learning spaces outside of the school to give children the opportunities to take learning from the classroom, into the beautiful outside areas. We have also spent a lot of time and money enhancing our outdoor equipment and facilities, with new climbing equipment, trim trails for all pupils, staging and a climbing ship for our Early Years pupils.

There is wheelchair access to the building and the school has a disabled toilet and shower facility.

We are very lucky to have stunning fields and gardens in our school grounds. These are used for recreation, sport, as an environmental resource and everyone helps to keep them clean and tidy and looking attractive.



We have taken a lot of time and care to develop our Peace Garden, to the rear of the school. This is a space where pupils and adults can enjoy quiet, reflective time in the beautiful surroundings. This space is also used routinely for our forest school sessions. Bumble and Tweet, our school mascots also make regular appearances in this area.

Wistow School is a very special school and those who work and study here are proud to be part of the school and its community.





## HEAD TEACHER'S WELCOME

---



Welcome to Wistow Primary School. As Head Teacher, I am extremely proud of our village school and our wonderful children, who make this such a great place to grow, learn and thrive together. We are committed to providing the very best possible care and education for all our children and all our staff and governors, are dedicated to ensuring that each child experiences high quality teaching and learning, which nurtures and supports their individual needs, interests and talents.

We strive to provide our children with a vibrant, engaging curriculum, which motivates and inspires them to become enthusiastic, lifelong learners. Whilst at Wistow, our children will experience a rich and broad curriculum that embraces opportunities for creativity, the arts and sport. We also enjoy excellent links with our local community and we participate in events and projects within the local area.

Our school Bible story is 'The Parable of the Sower' and at Wistow, we believe that our children come to school, to be the seeds, that are planted in God's soil and with love, nurture and learning, they can begin to grow and thrive in a variety of ways. We then send them out into God's world with the skills, knowledge tools to be the best that they can be, academically, personally and socially.

At Wistow, everyone matters. The school's values of honesty, resilience, forgiveness and respect are closely linked to Christian teaching and are at the heart of the life of the school. As a church school, we have Statutory Inspection of Anglican and Methodist Schools (SIAMS) inspections and at our December 2024 visit, we received a fantastic report, confirming that we are living up to our Christian vision. Alongside this, our November 2024 Ofsted visit, also commented how *'school are determined that all pupils will achieve well and that our curriculum meets the needs of all pupils'*. We strongly believe in making sure that the mental health and well-being of all our pupils is a priority and this was also recognised and praised by Ofsted.

To ensure that education is successful, a strong partnership between children, staff, governors and parents is imperative. If we work together, the most important part of the partnership will benefit – the pupils. Learning is a journey and it is one that we hope we can take together and make every child and ourselves, 'the best that we can be'.

As a school, we are committed to continual improvement and are dedicated to ensuring your child's time with us will be happy, enjoyable and inspiring. If you wish to know more, telephone/email for further details or come and visit the school, where we will be more than happy to show you around. Our contact details are at the end of this prospectus.

*Carla Cox - Head Teacher*

# SCHOOL ORGANISATION

## Staff

### Head Teacher

Carla Cox - Senior Leadership Team (SLT)

### School Business Manager

Angela Dethridge - SLT

*'The vision of being a small school with a big heart creates a culture centered on Christian love. Transformative pastoral and practical care is prioritised in this school community.'*

SIAMS 2024

### Teaching Staff

Emma Griffiths - SLT, SENCo & Head of Key Stage 1 (KS1)

Faye Storey - SLT & Head of Key Stage 2 (KS2)

Abi Bellerby - Early Years Class Teacher

Sarah Liptrot – KS1 Class Teacher

Sarah Jackson - KS2 Class Teacher

### Higher Level Teaching Assistants and General Teaching Assistants

Lynda Adams (HLTA/GTA)

Emma Brearley (GTA)

Sally James (HLTA/GTA)

Rebecca Nicholson (HLTA/GTA)

Susan Sampson (HLTA/GTA)

*'Staff describe the environment as a welcoming and affirming 'family.' They care for each other, professionally and personally. A determined, compassionate senior leadership team and a committed board of governors drive the vision of the school.'*

SIAMS 2024

### Administrative Staff

Angela Dethridge

Nicola Barley

### Home-School Link Worker

Susan Sampson



### Midday Supervisory Assistants

Lynda Adams

Ann-Marie Harper

Natalie Kitchen

Justine Marshall

Alena Tyler

Yvonne Feasey (Relief MSA)



### Kitchen Staff

Lauren Kirk (School Cook)

Kayleigh Bliss (Kitchen Assistant)

### Premises Staff

Vacancy (Cleaner)

Ginine Smith (Cleaner)

Dan Shipstone (Caretaker)

'The school is aware that most pupils live in a small, rural community. It purposefully ensures that pupils are exposed to the wider world. Pupils learn about other faiths and cultures. This is through class novels, visitors, educational visits and virtual tours. Pupils learn about the fundamental British values. This links closely with the school's own values.'

*Ofsted 2024*

## Governors

### Foundation Governors

(Barbara) Nicki Williams

(Safeguarding Link Governor)

Abigail Lund



### Parent Governors

Andrew Kehoe

Peter Blackley

### Local Authority Governor

Fran Manley

### Community Governor

Allen Blake (Chair of Governors)

### Co-opted Governor

James Collins (Vice Chair & Early Years Link Governor)

### Head Teacher

Carla Cox

### Staff Governor

Susan Sampson

### Clerk to the Governing Body

Debbie Penny

#### *Governors' Vision*

*Working as a partnership between children, parents, teachers and governors, we aim to deliver a happy and inspirational school community, where everyone is motivated to achieve their full potential and the passion for learning is nurtured through outstanding teaching practices.*

*We all aim to be the best that we can be and strive to make sure that Wistow Parochial C of E Primary School is also the best it can be.*

The Full Governing Body meets six times per year. Each meeting has a particular focus relating to Buildings/Health and Safety, Curriculum, Finance, Pay and Personnel.

# OUR SCHOOL AIMS AND VALUES

## Golden Values

As a school community (including children, staff, parents and governors), we spent time discussing and choosing which key values are important and significant to us. Our children chose their four most important values, which became our school “Golden Values”



*Respect*

*Honesty*

*Forgiveness*

*Resilience*

We recognise that there are many other desired values to have along with our Christian values and we will of course promote these in our teaching at all times. Our friends Bumble Bee and Tweet Robin, our school mascots, help us learn about all these values in school. They also keep an eye on us and ensure that we follow our school motto of:

*‘Be the best we can be!’*

Our vision and values are at the core of everything we do. They underpin our teaching and learning and provide an environment which prepares our pupils to become confident, happy citizens.

As a school, we created a vision statement to support our ethos and setting:

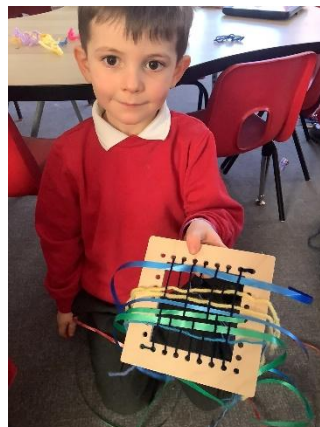
*Faith is all around us.*

*We have to have faith in ourselves in order to be the best that we can be.*

*We are a small school, with big hearts and together we beat as one.*

*Sowing seeds of knowledge and faith, with nurture and love;*

*we thrive, we grow!*



## Our Aims

- ✓ Enjoy independent learning and achieve high standards
- ✓ Be enquiring, imaginative, creative, confident and rational
- ✓ Seek out new knowledge and skills
- ✓ Develop values, beliefs and attitudes and a sense of right and wrong which helps us understand the world in which we live and recognise our obligation towards it
- ✓ Develop a concern for our environment and the inter-dependence of individuals, groups and nations
- ✓ Be aware of and appreciate human achievements in our own and other societies
- ✓ Gain an understanding of and respect for religious and moral values and tolerance of other groups, races, religions, ways of life and points of view
- ✓ Provide a safe, stimulating working environment, where each child may reach his/her full potential academically, socially, physically and spiritually
- ✓ Develop lively, enquiring and creative minds, the essential basic skills and knowledge to apply to tasks and activities, and the ability to question and argue rationally
- ✓ Develop an understanding of learning as a life-long and enjoyable process, which can also lead to economic well-being
- ✓ Respect and tolerate the religious and moral values of ourselves and others. As an Anglican Controlled Church School we promote Christian values and attitudes, particularly through our school ethos, acts of Collective Worship and pastoral care. This is in accordance with our school Trust Deeds
- ✓ Encourage staff and children to develop concern and care for themselves and others, to value each person as an individual
- ✓ Help children to understand the expected standards of manners and behaviour, both at school and in society in general
- ✓ Work with parents and guardians in the education of their children
- ✓ Help children to understand how to lead a healthy lifestyle which includes healthy eating, exercise and satisfying personal relationships
- ✓ Become an integral, lively and vital part of Wistow village and to look outwards and become involved in the wider community
- ✓ Encourage children to become active global citizens, with an understanding of global interdependence, social justice, conflict resolution and tolerance of other religions and cultures and to realise their rights and responsibilities
- ✓ Prepare our children and give them the best start to educational life, preparing them for the world in which they live in and giving them a love of learning and amazing memories to cherish.



*'Pupils in this school are polite, well behaved and positive ambassadors for their school.' Ofsted  
2024*

## British Values

The current requirement is that schools need to promote the fundamental British Values which include:

*Democracy*

*Rule of law*

*Individual liberty*

*Mutual respect*

*Tolerance of those with  
different faiths and beliefs*



These values are very much part of our school ethos and teaching and much of our PSHE curriculum ensures coverage of all of the above, along with the social, moral, spiritual and cultural development.

We pride ourselves in linking the British Values with our Golden Values and Christian Values, which in turn supports our pupils in becoming well-rounded, understanding, compassionate and caring citizens of the future.

## Christian Values

Christian values are at the heart of Wistow Parochial CE Primary School and worship is conducted in accordance with the principles and practice of the Church of England. Collective Worship takes place daily and our aim, through worship, is to make our children aware of what it means to be a community committed to serving and caring for each other, God and our world. We are incredibly lucky to have Reverend Canon John Weetman, from Selby Abbey also lead us in worship every other week. Every term, each class takes it in turns to lead a Collective Worship and parents and carers of the children in that class are invited to join us. We also have special celebrations at All Saints Church throughout the year, when families, friends and the Church Family are invited to join us.



## Church

Wistow School is a Church of England controlled school but embraces the concept of a global family, encouraging pupils to understand and appreciate the faiths and cultures of all. Our daily act of worship conforms to our Trust Deeds, following the principles and practices of the Church of England.

Wistow is an ecumenical community however, and so both Methodist and Church of England clergy conduct some services

and we also hold church services each term. The religious affiliation of children is never questioned and all are welcome. We encourage children to be part of Collective Worship as it helps to raise awareness of different faiths around the world, whilst embracing Christianity. However, parents are reminded that they have the right to withdraw their children from both religious education and Collective Worship, either in whole or in part. Alternative provision will be made for pupils who are withdrawn.



Above all else, the school is committed to supporting pupils' development into responsible, caring adults who do no harm and always strive to do good. Our values based approach to learning underpins all that we do and is singularly the most important part of our work and it can only be successful with your support. Our Golden Values are detailed within this prospectus and both children and adults should be familiar with these and how they link to our core Christian Values.



The faithful Christian vision underpins everything that happens at Wistow. Embodying the Parable of the Sower, the school provides the good soil that ensures pupils and adults thrive and grow beyond the academic.'

SIAMS 2024





As part of our Christian ethos, we do all we can to help local charities and those further afield. Our Care and Compassion in the Community project is about giving back to those in need in our local area. Student School Leaders help decide which charities to support each year, locally, nationally and worldwide. As a school, we feel it is so important that our pupils have a voice and choose charities they feel are worthwhile and then can donate and see their help, help others. We nominate two charities a year and call them our 'Childrens' choice charities'. Over the year, we organise events from dressing up days to special sales to help raise funds to help others and make a difference.



## Our School Mascots



Together with Bumble and Tweet, we all work together, as one big team to...



Be The Best We Can Be!

## OUR CURRICULUM

All aspects of the National Curriculum are taught and for primary pupils, this is composed of twelve subjects and Religious Education. Three subjects form the core of the curriculum: English, Mathematics and Science. The other foundation subjects include, PSHE, Computing, History, Geography, Design and Technology, Art and Design, Music and Physical Education. We also teach French as our chosen Modern Foreign Language. September 2014 saw the introduction of the new statutory National Curriculum and we currently use the programmes of study for all subjects alongside Pathways to Write in English and the White Rose Maths Scheme.



As a Church of England School, we use the Local Authority's Agree RE syllabus, with elements of the York Diocesan Scheme of work for teaching RE. Children's progress is assessed against the new curriculum using a system of whether a child is working below, working at, or above their age related expectations.

We use the Read Write Inc. programme for teaching phonics and early reading and writing. The scheme provides a progressive and systematic way of teaching the children to first learn sounds and then apply their sounds in their reading, spelling and writing. The programme is aimed at Reception and KS1 children but can be used to support children in Year 2, who require additional one to one catch up. Our phonics teaching is strong in school and children get off to a flying start.



Throughout school, there is a strong passion for teaching, supporting and developing a love of reading, for a range of purposes, especially enjoyment! Home school reading is encouraged across school and across all subjects, reading is a priority as it is a vital skill in accessing the world around us and we want pupils to have the tools, skills and knowledge to have the best possible start in life. World Book Day, is a particular favourite of the children and staff in school. We celebrate our love of books and get to dress up as characters from our favourite stories, whilst having lots of fun around English with games and activities!



*Staff are determined that all pupils will achieve well. The school ensures that the curriculum meets the needs of all pupils. The children in the early years get off to a flying start and are ready for Year 1. They achieve highly in phonics and learn to read quickly. Ofsted 2024*

Our curriculum also supports, develops and enhances each pupils' spiritual, social, moral and emotional well-being, through a range of exciting and diverse opportunities. This supports our pupils as learners, rounded individuals and members of Wistow School and its community. Our children regularly have Forest School sessions outdoors to support wellbeing, cooperation and life skills.



## Early Years Foundation Stage

The Early Years Foundation Stage children join Wistow Primary School in the Reception year from a range of early learning settings. The school has strong links with Wistow Smart Start pre-school and Maisy Moo's Day Nursery, which are based in the village. We hold lots of joint activities to support the smooth transition into full-time schooling in the run up to September. If your child attends another setting, is looked after by a private child minder, grand parents or you, then the school makes every effort to ensure that they are able to participate in this transition programme, so that they feel safe and confident when they arrive for their first day at school. Our commitment to you continues with the numerous opportunities that you have to be part of your child's learning journey as they progress through school.

*Pupils feel safe in school and have positive relationships with adults. Pupils are proud of the work they do. Their achievements are celebrated all around the school. The school's values are embedded in all that they do. Pupils learn about different faiths and cultures. They become ready for life in modern Britain. The mental health and well-being of pupils is a priority.*

*Ofsted October 2024*



The school has developed a highly effective, practical play-based curriculum founded upon the best principles and practices of the Early Years Foundation Stage (EYFS) developmental

phases. Children are provided with a diverse and rich curriculum, focusing on the areas of learning identified in the EYFS curriculum which are:

Prime Areas

- Personal, Social and Emotional Development (PSED),
- Communication and Language
- Physical Development Specific Areas
- Literacy
- Mathematics
- Understanding of the World
- Expressive Arts and Design



These are not taught as separate subjects; rather the school provides a stimulating learning environment in which children are encouraged to pursue their own interests and make links between all of their learning experiences, through first hand practical learning. The practitioners spend lots of time observing children, playing and talking to them, supporting, intervening, re-directing and encouraging them to ensure that their learning is as broad and balanced as possible and that children make outstanding progress.

All Reception children take part in a baseline assessment in the first six weeks of starting at school. This is to assess their understanding of all prime areas upon entry.

Our main aim is to ensure that children are excited and made happy by their early experiences, so that they continue to be enthralled by learning as they progress through the school. Wistow School is proud of its provision in the Foundation Stage and you should be assured that your children will get the best possible start to their school lives. We will be assessing children in the Early Years Foundation Stage (EYFS) using an electronic system called Tapestry, which is purely observational based and enables the practitioners to report on what they have seen and heard, rather than using set tests. It also allows parents to be part of the learning journey, viewing observations and sharing events and achievements from home on the platform too.

## Key Stage 1

WE have 7 year groups at Wistow School and 5 classes, so every year is different on how classes are set up. Sometimes we have mixed year groups, meaning that there may be years where some of the Year 1 children continue to work alongside the Reception pupils. The number of pupils involved varies from year to year, depending upon the class setups. The school makes the final decision on class allocation, taking into account each child's learning needs and we consult with parents when this occurs.



Children in Year 1 continue to experience a play based and practical curriculum until the Spring Term, after which learning becomes more structured and is primarily classroom based. Opportunities to use the outdoor learning area are still provided when appropriate.

Practitioners continue to support pupils individually but there is an increase in the amount of teacher directed, small group and whole class work. This is required to ensure that children gain increasingly sophisticated literacy and numeracy skills, which will support their further intellectual development. It also enables them to access more complex knowledge, skills and concepts as they grow older.



The curriculum, as previously mentioned, is based upon the statutory National Curriculum. Where possible, we try to link in the interests of the children into our topic based learning as well as looking to include key events happening across the world, the country and our local area.



## Key Stage 2

The freedom of the curriculum enables the practitioners in KS2 to continue using teaching strategies that encourage the emphasis on child initiated, practical, independent activities which allow the pupils to pursue their personal interests and strengths more vigorously, so that they continue to be captivated by the world and curious about its (and their own) possibilities. This does not mean that the school will neglect the pursuit of high academic standards. On the contrary, we believe that this approach will help secure higher attainment in English and Maths, whilst at the same



time recognising the value of intellectual diversity by ensuring that schools give increasing and equal importance to other skills and talents that the children may have.



The school has a strong record of academic attainment and achievement with results in English and Maths historically being in line or over the last few years, above with national averages.

The tables in the 'National Tests' section of this prospectus show our achievements from the last two years.

Details of our full two-year curriculum long term plans for all of our year groups can be found on our website at [www.wistowschool.co.uk](http://www.wistowschool.co.uk). These plans are flexible and are adapted to meet the needs of all our children and class structures; however, the coverage ensures that we are fulfilling our statutory requirements.

*There are many opportunities for pupils to take on responsibility. They become school councillors, eco-warriors and play leaders, for example. Pupils have a strong voice.' Ofsted 2024*

## Greater Depth

Within each year group, children are expected, by the end of July, to be working at the Age Related Expectation (ARE). Some children reach that expectation earlier than July and are then moved on to work at 'Greater Depth' (GD) in that subject. This allows them to extend their knowledge by using and applying existing skills in a variety of fun activities and challenges.

## Special Educational Needs (SEN)

For those pupils who experience difficulties in their learning, either temporarily or as a result of a clearly identified longer term learning difficulty, we have a robust approach to early identification of issues and a strong team of teaching assistants and capable teachers who ensure that these needs are fully met. We have a highly trained SENCo, Mrs Griffiths, who advises, supports and assesses individual needs as and when required. The school works well with external agencies and parents can be assured of our utmost support in ensuring that all children get the help they need, whenever they need it. Our local SEN offer can be viewed on our website.

*Pupils with special educational needs and/or disabilities (SEND) make good progress.'*  
*Ofsted, 2024*

## Homework Policy

In EYFS children bring home books to read and we encourage parents to share a love of reading by looking at a variety of books at home. We also ask that children bring in small things from home that they have done and feel proud of doing/making. This is a great way of sharing achievements. Children will also bring home letter sheets, to practice letter formation.

All children, are asked to read at least four time a week, to support literacy skills and confidence in reading. This really does support their development, understanding of work structure, vocabulary and text types.

From Year 2, all children receive spelling and calculation homework. The spelling homework focusses on spelling patterns and word meaning. The calculation homework is a range of questions that encourages rapid recall of number and builds up children's confidence and stamina at solving numerical equations.

We also have projects over the year that children can take part in, should they wish. This is a lovely way of families working together to support home/school partnerships in various curriculum areas.

## Relationships and Sex Education (RSE)

Relationships and sex education is learning about the emotional, social and physical aspects of growing up, relationships, sex, sexuality and sexual health. It should help support pupils to gain accurate information, develop skills and form positive beliefs, values and attitudes. It also gives pupils essential skills for building positive, enjoyable, respectful, loving and non-exploitative relationships and staying safe both on and offline, enabling them to take responsibility for their body, relationships, reproduction, sexual health and wellbeing.

At Wistow Primary School this is taught as part of the Science, PSHE and Computing Curriculum.

\*Parents should be aware that they have the right to withdraw their children from SE (Sex Education) as this is not part of the statutory Science Curriculum.

## Sport and PE

At Wistow Primary School, we are very proud of the opportunities and access to different sporting activities that are on offer both during the school day and as part of after school clubs.

We have actively used the Government Sports Funding to enhance both the teaching and learning of our pupils through specialist training for both the pupils and practitioners. We have provided on site adventurous activities to encourage the children to explore their potential interests beyond the usual activities on offer at school. We have had boxing workshops, a vertical climbing wall in school, martial arts, skateboarding workshops and more. These types of activities ensure our pupils



eyes are opened to the wonderful range of sports there are and to give them opportunities to experience them, and perhaps continue them.



As part of the statutory PE curriculum, we are required to support the children in their water safety and swimming abilities to ensure that all children can swim at least 25m of a recognised stroke by the time they leave in Year 6. We take the children to an hour of swimming lessons weekly, during the Spring Term when they are in Rievaulx class (our current Year 5 and 6 class).



We hold an annual sports day, which is a race based day, with a range of events and all children are able to access this at their own level and pace. In order to inspire and encourage team-work skills amongst our children, we take part in a range of inter school competitions, which allow us to celebrate the achievements of individuals and collective groups of children.

Although we try to develop a positive ethos of winning, we always try to ensure that participation and effort is the best motivation for taking part.

At Wistow Primary School we offer a range of after school sporting clubs each week, which in the past few years have included football, netball, dance, rugby and more.



All of these clubs are run by school staff or sporting organisations, including York City Football Club, and Diamond Dance. We are very aware that many of our children enjoy sporting activities out of school, some of whom compete to a high level and, as a school we will always try to support our children in their interests and pursuits.



## Instrumental Tuition



Private tuition is available in school time for keyboard. North Yorkshire Council Music Service also come into school to teach individual and group keyboards, cello, trombone, and the guitar. Please ask at the school office for further details.

## Excellence, Enrichment and Equality



Like most schools, Wistow offers a broad range of curricular, and extra-curricular activities to enrich children's learning experiences. Each class regularly makes off-site visits and we have lots of visiting groups and individuals who contribute to the children's learning, examples include trips to the Royal Armouries, The Deep and Eden Camp, to support and celebrate World War 2 topic work in Year 5/6.

Visitors into school are something we value highly and some examples are: crafting workshop led by a local artist, dance workshops with a professional dance company, Yoga lessons – focusing on mindfulness and well-being, Olympic and Paralympic Athletes, archeologists, poets and parents sharing their roles in our community.



There is also the annual Year 5/6 residential visit, which is always great fun! We rotate locations to keep pupils challenges and the range of sports and activities mixed.

We also have a range of after school clubs including Songbirds Choir who attend the annual Young Voices concert at Sheffield Arena (as well as performing more locally), Strictly Dance Club, Gardening Club, Craft Club, Art Club and Homework Club.

Each year, the school reforms its School Council and the pupils who demonstrate significant commitment to the school aims and values, allied with a high level of social emotional maturity and organisational skills, will be invited on merit to join this group. There are two representatives from each class who are part of the team and every pupil plays an important role.



Across the other year groups, we try to encourage a commitment of responsibility towards other areas of development. These include Digital Leaders, who take on the lead for our school e-safety; Librarians, who ensure that the Library is tidy and that children are issued with books for loan each week and Play Leaders, who help to organise sports events and play time activities throughout the year. We also have Eco Warriors, who work tirelessly to make us more eco-friendly as a school.



We also have a group of Worship Leaders, who support us in ensuring that our school is distinctively Christian by upholding and promoting our Christian ethos and vision. The children help us by planning collective worship themes, leading prayers at key services and leading worship during the year. This year they have spent time designing our Prayer Spaces in our outdoor areas to enable us all to take time and reflect and interact with the world around them in a beautiful space. As part of our Modern Foreign Language teaching in school, we have allocated ambassadors from each class, who learn and then teach songs and games to their classes on a regular basis.

All pupils belong to a group and work with their peers on special afternoons on planned sessions.



We pride ourselves on our personal development of our pupils, in which our recent Ofsted commended us and graded us as continuing to be 'Outstanding'.



*'The school is very much part of the local community. It is closely linked to the village church. Pupils raise money for charity and take part in environmental projects. Every pupil has a role in school. They take these responsibilities seriously and respect each other' Ofsted, 2024*

## NATIONAL TESTS AND ASSESSMENTS

At Wistow School we have made the decision to join in with National Tests as part of the Summative Assessment process for the children.

Every year group is assessed on a regular basis, however, only Years 2 and 6 undertake the SATS type assessments.

In Key Stage 1, tests are administered in Year 1 for Phonics Screening and Year 2 for English and Maths. Tests are marked internally and moderated by the Local Authority.

In Key Stage 2, tests are administered in Year 6 for Reading, Spelling Punctuation and Grammar and Maths and are sent away for external marking. Writing is assessed and moderated within school. All children are also subject to ongoing Teacher Assessments, which are moderated by the local authority.

The National Curriculum Assessment results of pupils in the school for **2023 - 24** are as follows: (Green shading indicates areas above National Averages)

### Data 2023-2024

#### Early Years (EYFS) Assessment Data (21 pupils)

School	National
86% Meeting Expectations	67.7% Meeting Expectations

#### Year 1 Phonics Results (26 pupils)

School	National
96% Meeting Expectations	79%

Year 2 Phonics resit – 100% (1 pupil)

#### Key Stage 1 Assessment Data (8 pupils)

SATS in KS2 are non-compulsory, however we choose to continue these to support tracking pupils' progress.

	WAT
Reading	88%
Writing	62%
SPaG*	62%
Maths	78%

### Key Stage 2 Assessment Data (23 pupils)

	WAT (Including GD)	GD	National Average WAT	National Average Greater Depth
Reading	78%	27%	74%	29%
Writing (TA)	74%	13%	72%	13%
SPaG	78%	32%	72%	32%
Maths	78%	17%	73%	24%

\*Spelling, Grammar and Punctuation

### 2022-2023 Data

#### Early Years (EYFS) Assessment Data (25 pupils)

School	National
84% Meeting Expectations	67.2% Meeting Expectations

#### Year 1 Phonics Results (8 Pupils)

School	National
87.5% Meeting Expectations	78.9%

### Key Stage 1 Assessment Data (17 pupils)

	WAT (Including GD)	GD	National Average WAT
Reading	67%	6%	69%
Writing	61%	0%	61%
SPaG*	61%	17%	-
Maths	78%	22%	72%

### Key Stage 2 Assessment Data (20 pupils)

	WAT (Including GD)	GD	National Average WAT	National Average Greater Depth
Reading	89%	47%	72.6%	29%
Writing (TA)	74%	10%	71.5%	13.3%
SPaG	94%	57%	72%	-
Maths	85%	31%	72.8%	23.8%

## SCHOOL ADMISSIONS

### Pre-School Children

Parents of pre-school children should apply for a place at Wistow School on-line through the Local Authority by a set date which varies from year to year - usually mid-January. Please see the website details below. At Wistow School, we have a maximum admissions number of 20 pupils. We only take this amount, as due to having 5 classes in a small Victorian school, we have to merge classes over the years.

When we contact you with the invitation from North Yorkshire Council to apply for a place for your child at primary school on-line, Wistow School will actively seek to confirm your preference choices in order to establish links with parents, to facilitate transition from pre-schools/ home at an early stage. We welcome visits, so that you can see our little school and you can explore what we have to offer.

Transition for possible new starters commences in the month of April before they are due to start school. Once places have been confirmed school will reach out to you with invitations to visit and take part in various events during the summer term. There will be a new starter parents meeting to help answer any questions parents/ carers may have and we welcome new starters to come along too, so they can spend time in class. Then there are taster sessions and a school sports picnic that we invite you all to come along to.

### Midyear Admissions

Parents of children starting in other year groups are welcome to contact school to make an appointment to visit the school prior to their application for admission through the Local Authority.

The telephone number for North Yorkshire Council Admissions Office is: 01609 533679.



Email: [schooladmissions@northyorks.gov.uk](mailto:schooladmissions@northyorks.gov.uk)

Website:

<http://www.northyorks.gov.uk/school-admissions>

## CLASS ORGANISATION

Wistow is a medium sized school and fluctuations in pupil numbers from year to year mean that class organisation can change. In 2024-25 we will have 118 pupils on roll and 5 classes which are all named after North Yorkshire Abbeys:

*Selby Class*

*Fountains Class*

*Bolton Class*

*Byland Class*

*Rievaulx Class*



The school has a dynamic and creative approach to the curriculum, which means that every child has access to a high quality learning experience appropriate to their level of development and need.



## THE SCHOOL DAY

### Arrival

**Children should arrive by 8:50am in the morning to begin their school day.** Children come into school at 8:50am and registration closes at 9:00am. Children who arrive after the doors have closed at 8:50am must come in through the main door and report to the office. If you arrive after the children's doors have closed at 8:50am, your child will be classified as late before registration closed. Any arrivals after 9:20am, will be classified as late, after registration has closed. Lateness on a morning and collection after school is monitored closely.

Morning Break is from 10:30am to 10:50am

### Lunch Time

**Our lunchtime is 12:00pm – 1:00pm**

We all have lunch together as a whole school and this allows all children to socialise with all ages

### Home Time

**Afternoon Registration is at 1:00pm**

Afternoon Break is from 2:40pm to 3:00pm

**School finishes at 3:30pm daily**

The whole school day is from 8.50am to 3:30pm and therefore 6 hours and 40 minutes per day and 33.3 hours per week.

## Attendance

If your child is absent from school for any reason, you are required to inform the school of this as soon as possible and by no later than 9.30am on the first day of absence, where this is reasonably practicable. The nature of illness and expected date of return will be required. Telephone calls are taken from 8.30am daily. Before that an answer machine is available. Procedures are followed to ensure that all absences are accounted for in a prompt and efficient manner, and for safeguarding and educational reasons we follow up all unexplained absences, if we have not received a message by 9.30am. Lateness will be recorded in the register and if lateness follows a persistent pattern or occurs frequently, the Head Teacher will be informed and they will work with parents to help improve attendance.

*'Pupils attend school well. Leaders work with families when they need support to ensure their children attend school. There is a robust approach in place to check on absent pupils.'*

*Ofsted, 2024*

## After School Provision

WOOSH is a before / after school club based on school premises. Further details can be found on our school website. Woosh takes bookings directly, this is not done via school. For further information please contact the Woosh Manager on:

[woosh-manager@outlook.com](mailto:woosh-manager@outlook.com)



## School Meals

Dinners are freshly cooked in our own kitchen and served 'family service' style in the hall. In line with government legislation, all children in KS1 are offered a free school meal on a daily basis. If your child is in KS2, then school meals are reasonably priced. Meals can be booked by completing the electronic menu form that is sent out every 3 weeks, via ParentMail. Payment for school meals should be made via ParentPay (our electronic online payment system). Payment is required in advance and may be made weekly, monthly, half-termly or termly if parents wish. Payment will remain on account and processed as meals are taken each day.

Healthy eating is encouraged, both at lunchtime and at playtimes. We offer free fruit on a daily basis to all of our children in KS1 and free milk to children under the age of 5. We can supply both of these items to other children at a reasonable cost – please contact a member of the office for further details.



**Please be aware that we have children in school with nut allergies and therefore nuts of any kind may not be brought into school.** Please

check the ingredients on all packaging prior to sending food for packed lunch in with your child/ren. Please ensure that you let

us know in the new starter forms if your child has any allergies or medical conditions, so that we can ensure things are in place to support them in school.



## TERM DATES

	School Opens	School Closes
<b>AUTUMN TERM 2024</b>	Tuesday 2 <sup>nd</sup> September Monday 3 <sup>rd</sup> November	Friday 24 <sup>th</sup> October Friday 19 <sup>th</sup> December
<b>SPRING TERM 2025</b>	Tuesday 6 <sup>th</sup> January Monday 23 <sup>rd</sup> February	Friday 13 <sup>th</sup> February Friday 27 <sup>th</sup> March
<b>SUMMER TERM 2025</b>	Monday 13 <sup>th</sup> April Monday 1 <sup>st</sup> June	Friday 22 <sup>nd</sup> May Friday 17 <sup>th</sup> July

**May Day bank holiday** – Monday 4<sup>th</sup> May 2026

Teacher Training Days
Monday 1 <sup>st</sup> September 2025 Friday 29 <sup>th</sup> November 2025 Monday 5 <sup>th</sup> January 2026 Friday 22 <sup>nd</sup> May 2026 Monday 20 <sup>th</sup> July 2026

Key Stage 2 and School Tests Week
Monday 11 <sup>th</sup> May to Thursday 14 <sup>th</sup> May 2026

# UNIFORM

## School Uniform

### Boys

Grey trousers or **shorts** \*

White shirt or polo shirt

Red jumper / sweatshirt

Black shoes / plain black boots in winter

Subtle hair accessories (red / black)

### Girls

Grey trousers / grey skirt or pinafore / shorts

White blouse / polo shirt

Red jumper / sweatshirt / cardigan

**Red gingham summer dress** \*

Black shoes / plain black boots in winter

Subtle hair accessories (red / black)



Please note that school shoes should be plain and smart shoes, not trainers.

Please note black/grey tights and long socks to be worn in winter, short or long black/grey or white socks in summer.

**\*These are to be worn in Summer Term 1 & 2 and Autumn Term 1 only**



## PE Kit

### Girls and Boys

Black / navy shorts

Plain or school logo **red** t-shirt

Black pumps (indoor)

Trainers (suitable for outdoor use)

During the winter months, we would recommend that the children also bring black / navy jogging bottoms and a plain red jumper for when PE is outdoors (no toggles, zips or hoods for safety).

These are only to be worn in the colder months, P.E shorts and t-shirts should be brought into school at all times, as this is indoor kit.

PE kits should be brought to school at the start of each week on a Monday and taken home on a Friday for washing. No earrings are to be worn during PE lessons.

## Leavers Hoodies

During the Summer Term before your child is in Year 6, they will be offered the option to buy a red Leavers Hoodie, with the year of leaving on the back. This is a privilege for the Year 6 pupils and is something that is earned, through excellent behaviour and leading by example for the rest of the school. They are then permitted to wear these in place of their jumpers throughout their last year and it is a great way for them to stand out as role models for the rest of the school.



## Jewellery and Hair

For safety reasons the wearing of jewellery (with the exception of watches) is discouraged. If your child has pierced ears, please ensure that only small studs are worn. We do not allow Smart watches in school, this is for safeguarding reasons.

All jewellery must be removed when taking part in PE and swimming. We also ask that children with shoulder length/long hair have it tied back at all times, with black or red, subtle hair accessories. When taking part in PE lessons, children must have it tied back with a suitably soft item to ensure their own and others health and safety, as per the Association for Physical Education guidelines.

## Make Up

Make up is not allowed to be worn in school and nail polish should be removed before the start of school on Monday morning.

# PARENTS, SCHOOL, COMMUNITY AND HOME

To strengthen our home and school partnership we have several ways of keeping parents/carers informed of events in school and the progress of their children. The parent/school partnership is key in ensuring your child has the best possible education. Each half term, we send out our Head Teacher's newsletter and a school class newsletter, via email. and this is also posted on our school website. The newsletters give us the opportunity to impart important information to parents / carers and enables us to celebrate events that have taken place in school, as well as highlight the dates of forthcoming activities and events.



Our website: <http://www.wistowschool.co.uk> is updated regularly and gives details of term dates, after school clubs, notices of emergency closures, school policies and a calendar of forthcoming events etc.

## ParentMail

We use an email and text messaging service, ParentMail, to communicate urgent notices and reminders. We also use this system to send out electronic consent forms for educational visits and school meals choice forms, where you are required to book meals for your child three weekly, in advance. If you miss the deadline for the meals form, you will be required to send your child into school with a pack-up.



On a regular basis, we welcome parents into school to come and share in their child's learning and experience how we teach at Wistow. We have had sessions on reading, Maths, Art, PSHCE and more, but they are always interactive and fun! These are well attended and also gives us a chance to enhance our home school partnership.



We hold Parent Teacher Consultation evenings twice per year where parents/carers can book an appointment with class teachers to discuss their child's work and progress. In addition, parents are welcome to make an appointment to see their child's teacher or the Head Teacher at any time.

We send out written reports to parents once a year in the summer term. Wistow School has a Home School Agreement which is issued upon

admission. It is signed by both school and parent/carer and a copy is kept in the child's file. We also have half termly open afternoons when parents, carers and grandparents are invited to come into school to take part in lessons and share work and progress. We operate an open door policy and we are here to support you and your child, so please speak with your child's class teacher in the first instance and we will endeavor to do all we can to help you.

## ParentPay

Using a secure website called ParentPay, we are able to accept credit or debit card payments online for items such as dinner money, school trips and other school events. This is our preferred method of making payments to school. ParentPay is easy-to-use and offers the freedom to make online payments whenever and wherever, 24 hours a day, 7 days a week – safe in the knowledge that the technology used is of the highest internet security available and that funds will reach school safely. ParentPay provides a secure online account, activated using a unique username and password (which are supplied by the School Office). Any questions should be directed to the School Office.



## FOWSA / PTA



**FOWSA's vision** is to welcome new parents to the school and work together to help support and develop the school, enhancing our children's education and surroundings through exciting fund-raising and promotional events.

*"We strive to support the school in any way we can and aspire to grow as a group, continuing to help the school grow and blossom!"*

Our Parent Teacher Association, FOWSA (Friends Of Wistow School Association) does a really amazing job raising thousands of pounds each year towards new equipment for school and exciting events. The PTA consists of staff and parents, all parents become members automatically when their child starts school. FOWSA arrange a number



of fund-raising events and are always looking for new helpers...and this really only has to be a few hours of your time each year! Please lend them your support - new ideas are very welcome. Remember, this group works for the benefit of our school / community and your children. Parents are always welcome to join meetings – look out for information about meetings and forthcoming events on newsletters and the dedicated FOWSA Facebook page.

## Charging for School Activities



Under the legislation brought in by the 1988 Education Reform Act, schools are only allowed to ask for voluntary contributions towards the cost of such activities as school outings, travelling to swimming lessons etc. As we would like most of our activities to continue, we hope that the voluntary contributions will be sufficient to allow the outings to take place. The school is not able to fund these activities and we hope that, with parents' support, our out-of-school activities will continue to play an important part in the school's curriculum.

### Residential Visits

When children are taken on residential visits, the full cost of board and lodging will be charged. When such visits are wholly or mainly in school hours, charges for board and lodging may be partially remitted for those pupils whose family is in receipt of Income Support, or is in receipt of Child Tax Credit and has an income below £16,190 (correct as of April 2013) but is not claiming Working Tax Credit.

### Non-Residential Visits

When children are taken on a non-residential visit parents will be asked to make a voluntary contribution towards the cost. The visit will then only be possible if sufficient contributions are forthcoming. If a non-residential visit is made out of school hours the cost of the visit will be charged to the parents of each participating child.



## Transition to Secondary School

Parents are contacted early in the school year in which their child is due to transfer to secondary school by North Yorkshire County Council, through our school. They are given a list of schools, a guide for parents, and invitations to the various secondary school 'Open Day' events. Parents are requested to apply for a place at the secondary school of their choice for their child(ren) on-line and this is usually requested to be submitted by the end of October. Parents are informed of the place allocated to their child during the following spring term, and they may then appeal if they wish. Most of our children transfer to Selby High School and some to Brayton Academy. Pupils are invited to attend transition events during the year. The secondary school teachers also visit our children here and discuss any issues directly with our members of staff.

## Community Links

The school has close links with village organisations, especially All Saints Church, The Methodist Chapel, Jubilee Hall, Wistow Smart Start (the community playgroup) Maisy Moos Nursery and WOOSH (before & after school club). We also take part in activities organised with local cluster group schools.



## Pupil Welfare Safeguarding Pupils

At this school, the health, safety and well-being of every child are paramount concerns. We listen to our pupils and take seriously what they tell us. Our aim is that children will enjoy their time as pupils in this school. We want to work in partnership with you to help your children to achieve their full potential and make positive contributions.

To promote a safe environment for pupils, our selection and recruitment policy includes all checks on staff and regular volunteers' suitability, including Disclosure and Barring Scheme checks, as recommended by North Yorkshire Council in accordance with current government legislation. In accordance with our responsibilities under section 175 of the Education Act 2002, we have a Designated Person for Child Protection, Mrs Carla Cox (Designated Safeguarding Lead) and Mrs Emma Griffiths (Deputy Safeguarding Lead), both of whom have received appropriate training for this role. It is their responsibility to ensure that all members of staff in contact with children receive child protection awareness training on a regular basis. Should you have any safeguarding concerns, please speak with either of these ladies directly.

All North Yorkshire Schools, including Wistow Primary School, follow the North Yorkshire Safeguarding Children Board procedures. The school will, in most circumstances, endeavor to discuss all concerns with parents about their child/ren. However, there may be exceptional circumstances when the school will discuss concerns with Social Care and/or the Police without parental knowledge (in accordance with Child Protection procedures). The school will, of course, always aim to maintain a positive relationship with all parents. The school's Child Protection Policy is available publicly, on our school website, or a hard copy can be provided upon request.



**Contacts:** School Contact Number: 01757 268378  
 headteacher@wistow.n-yorks.sch.uk  
 e.griffiths@wistow.n-yorks.sch.uk  
 Governor with Safeguarding Responsibility—Mrs N Williams  
 Local Authority Designated Officer (LADO) lado@northyorks.gov.uk or 01609 533080

## KEY SCHOOL POLICY

### Behaviour and Rewards

Detailed information regarding our behaviour and rewards system can be found in our Behaviour Policy, which forms part of our Admission Pack for new starters to Wistow School. The policy can also be viewed on our school website.

### Photographs

#### Professional Photography

A photographer usually comes into school in September to take individual and sibling photographs and November for whole class photographs. Whole school photographs will be taken every seven years. Year 6 photos are also taken every year in summer term prior to the children leaving primary school.



Pupils have a voice and influence. This is a strong feature of the school. Pupils are enabled to make a difference through an impressive range of responsibilities and opportunities. Every pupil takes on a role. Groups, such as wellbeing ambassadors or eco-warriors, are inspired to care for the world around them through their actions.'

SIAMS 2024

#### Photography Permissions

The school is very aware of the need to use photographic and digital images appropriately and sensitively. A copy of our policy on this is available on our school website. Parents have a choice as to whether or not they wish their child to be photographed / filmed in school. A form to obtain parental permission for the school to take and use photographs / videos / digital images for use is issued to parents as part of the admission process and the completed form is valid for the duration of the child's time at school. School use Tapestr (EYFS learning platform) which tracks and shares their learning journey in reception class only and parents can access this at home. We also share learning via Facebook and the school website and



the children love to see their photos and learning online, especially to share with family and friends.

#### Parents/Carers Responsibility

Parents are not permitted to take photos or videos at school events, such as school plays and sports events. We will endeavor to allow time for photos after events and school will share photos on our platforms for parents and families to see.

Parents are respectfully asked not to post any photo (that includes any child other than their own) onto a public social network site such as Facebook, for safeguarding reasons.

## Health and Safety

The school has a detailed Health and Safety Policy, which can be viewed on the school website and a Governing Body Health and Safety Governor, who carries out termly inspections of the school building and equipment, alongside the School Business Manager or Head Teacher.



Risk Assessments are carried out as appropriate and there is also a Crisis Management Plan in place to deal with incidents / accidents involving pupils and staff.

Most staff are first aid trained to a basic level and nominated first aiders have been trained to a higher level. We also have staff, who are trained in Pediatric first aid. An accident book is kept on site.

Fire Drills and lockdowns are carried out at least termly at varying times of the day, and without warning to ensure procedures are followed accurately by pupils and staff. Reports documenting the outcome of these evacuations are kept on file. Pupils understand the processes and are taught about them and know what to expect before experiencing them as drills.

## School Security

Whilst Wistow School wishes to maintain an “open door” policy, visitors to the school are required to sign in at the main office and are asked for photographic identification. The school operates a secure keyfob entry system and therefore parents/carers must also report to the main office when dropping off/collecting their children at times other than the official school start and finish times and must complete the sign in/out book for pupils.

## School Transport and Access

All children arriving at school must enter by one of the two pedestrian gateways. The vehicular access and car park is for staff only. We are very concerned about road safety, and the children are taught aspects of road safety as part of their work in school. We have appointed two children as Junior Road Safety Officers who support other children in school and help to raise awareness.



We respectfully ask parents to assist by:

- Keeping the entrance to school clear and not blocking the pathways with cars, so as not to divert children into the road.
- Coming into the playground to collect your children, rather than letting them come out on the road to find you.
- Ensuring that you do not reverse into the school entrance when driving away.

- Encouraging your child to cross the road safely and use the green cross code.
- Being mindful of our neighbours and not blocking access to their driveways or block access roads and park legally.

Children are welcome to come to school on their bikes/scooters, but are not allowed to cycle on school premises. **They must dismount before entering school and must wear a helmet**. There is a bike rack available on the playground for storing bikes/scooters until the end of the day.

The use of parental cars for school related activities normally falls within two categories:

- Where the Head Teacher organises parental cars to take pupils on a school trip and parents or other volunteers carry children other than their own.
- Where, because of safety or other issues, parents wish to arrange transport for their own children on school trips.

In the first case, the Head will ensure that written permission is received and that the driver and vehicle are properly insured. This should show who arranged the insurance cover for the vehicle, and must include Third Party liability for all passengers. The Head will also take reasonable steps to ensure that volunteer drivers are reliable and competent including taking copies of a driving license and of the current MOT certificate of the vehicle.

In the second case, the Head will not refuse a parent the right to make such arrangements. However, it is important to ensure that parents and school staff understand the extent of their obligations and that children are properly seated according to current legislation - guidance on this will be given by school.

On coaches, children will be seated two to a double seat and not on the front seat or the middle seat on the back bench.



## Internet Access

Children have access to interactive whiteboards, Chromebooks and iPads / tablets. These are used as a support resource to all areas of the curriculum and children may use the internet under the supervision of a member of staff. However, due to a statutory obligation issued by the LEA, we require agreed consent from parents / carers before pupils can be allowed to use the internet. This permission is gained by signing the 'Home-School Internet for School Users Agreement' form that is part of the Admission Form, and that must be completed prior to a child attending Wistow School. You must have talked through this document with your child at home, signed the document and returned it to school before your child will be allowed access to the internet in school. We have substantial filtering software in place and provide a great deal of focus on internet safety. Whenever the computing equipment is used in school, the children are reminded of internet safety and how to act and use it responsibly. We use it for a range of purposes across school and it is a vital tool in supporting your child, so please ensure that the Home-School User Agreement is completed and returned to school.



## Emergency Closure Procedures



Very occasionally, in exceptional circumstances, it may be necessary to close the school at short notice. In the event that this happens we will make every effort to contact parents/carers by text and email and, if appropriate, via local radio stations. Our website and Facebook page will also provide updates and any closure details.

## Medical Matters

### Accidents / Illnesses to Children at School

In the case of a child being taken ill at school, parents will be contacted immediately. Therefore, we will need your mobile contact and work numbers and also the name and telephone number of someone else to contact, should parents not be available. **Up-to date medical and contact information on your child is essential.** Please make sure that you let us know straight away of any changes



to any telephone numbers and contact details. In the case of an emergency, a child will be taken straight to hospital and parents notified. Should a child receive minor injuries during the course of a day, parents will be informed when they collect their children from school or earlier, if appropriate.

## Administration of Medicines

It is most important that the guidelines for bringing medicines into school are adhered to for everyone's safety. The guidelines are as follows:

- Only essential, named, prescription medicines will be administered and this requires written permission from the parent or carer. If the medication is required three times per day, then this medication can be timetabled and managed outside of school hours. If however, the dosage is 4 times a day, then staff will administer one dose during the school day. Administration of Medication Permission forms are available from the office or on the school website via the 'Parents' tab and then 'Forms' and can be completed when the medicine is brought into school. Normally, the Headteacher or school administrator will ensure that medicines are given, although other staff are able to do this.
- Reliever inhalers for asthmatics, clearly named, will be kept in the classroom where the child concerned can reach it quickly. Auto-injectors for high level allergies will also be kept in classrooms for quick and easy access.

All other medicines will be kept in a lockable cabinet in the office. The full policy can be found on the school website.

It is imperative that you keep us up to date on any medications and conditions for your child, so please ensure that you speak with a member of the office team if there is any change to your child's health and details.

## Medicals

Health Screening by the Healthy Child Team (NHS) and Local Authority take place throughout the year after your child has turned five years of age. Parents are always notified and asked for permission. Weight and height screening is carried out during Reception and Year 6 as part of the National Child Measurement Programme.

## Infectious Diseases - Minimum Periods of Exclusion

Disease/ Illness	Exclusion Period
Covid-19	The government now say that pupils can be in school. However, if your child is not well enough, please keep them off, as we want to prevent the spread of germs and infections. They may return when feeling able to well enough.

Antibiotics prescribed	No exclusion necessary
Temperature	24 hours
Vomiting	48 hours symptom free
Conjunctivitis	No exclusion necessary. Treatment for the infection is usually advised to prevent further spread.
Diarrhoea	48 hours from last episode
Chicken Pox	5 days from appearance of rash
Gastroenteritis/ Food poisoning/ Salmonella/ Dysentery	Until authorised by DCP*
Infective Hepatitis	7 days from onset of jaundice
Measles	4 days from appearance of rash
Meningitis	Until recovery
Mumps	Min 5 days and until swelling has gone
Whooping Cough	21 days from onset
Rubella	6 days from appearance of rash
Scarlet Fever and Strep Infections	24 hours after treatment begins
Tuberculosis	Until authorised by DCP*
Typhoid Fever	Until authorised by DCP*
Impetigo	Until skin is healed or 48 hours after commencement of antibiotics
Lice	Until appropriate treatment has been given
Plantar Warts	No exclusion but must be treated and covered
Ringworm of the scalp	Treatment required but no exclusion necessary
Ringworm of the body	Treatment required but no exclusion necessary
Scabies	Treatment required but no exclusion necessary
(* DCP – District Community Physician)	

Children suffering from infectious diseases, including sickness and diarrhoea, should not be sent to school. Following a bout of sickness or diarrhoea, we require you to keep your child away from school for 48 hours after the last episode.

**Please support the school with this, as sending your child in prematurely could cause the spread of infections and illnesses unnecessarily.**

## Children Leaving School Premises

If, for any reason, parents wish to collect a child at any time, they should inform the class teacher and complete either a 'Short Absence Form' that is on the school website, under the parents drop down menu. On no account will children be allowed to leave the premises without prior arrangement. Parents / carers must complete the sign in/out book for pupils when taking their child out of school during the school day and upon their return.

## Leave of Absence During Term Time

The law states that parents / carers do not have the right to take their child out of school for a holiday during term time. We will only consider authorising leave of absence in exceptional circumstances. These could include:

- Service personnel returning from active deployment
- Where inflexibility of the parents' leave or working arrangement is part of the organisational or company policy. This would need to be evidenced by the production of written confirmation from the organisation / company.
- Where leave is recommended as part of a parents or child's rehabilitation from medical or emotional problems. Evidence must be provided.
- When a family needs to spend time together to support each other during or after a crisis.

Requests for leave should be made in advance, in writing (at least 6 weeks prior to the commencement of leave, when possible), and an appointment made to discuss the absence with the Head Teacher. If the school does not agree an absence, it will be recorded as unauthorised. Please be aware that unauthorised absence may incur a penalty notice. Please see our Term Time Attendance Policy on our website for further details.

A session is either a morning or an afternoon in school, therefore there are two sessions in a day and ten sessions in a school week.

## General Data Protection Regulation (GDPR)

The school has appointed Veritau Ltd as its Data Protection Officer (DPO). The role of the DPO is to monitor our compliance with the UK GDPR and the Data Protection Act 2018 and advise on data protection issues. If you would like to discuss this privacy notice or our use of your data, please contact Veritau or School Business Manager (School SPOC). All of our GDPR related policies can be found on the school website.

Veritau's contact details are:

Schools Data Protection Officer

Veritau

West Offices

Station Rise

York

North Yorkshire

YO1 6GA

[schoolsDPO@veritau.co.uk](mailto:schoolsDPO@veritau.co.uk) // 01904 554025



*Please ensure you include the name of your school in all correspondence.*

## Complaints Procedure

From September 1989, under the Education Reform Act 1988, a complaints procedure came into operation which covers the following areas:

1. The provision of a curriculum including religious education and worship
2. The implementation of a National Curriculum
3. Operation of charging policies in relation to the curriculum
4. Compliance with regulations about the provision of information

Any matter not covered by the definitions set out above (e.g. discipline, admissions), do not come within the scope of these arrangements.

The first stage of any complaint should be with the teacher, then the Headteacher, followed if necessary by a formal complaint to the Governing Body. There is provision for appeal to

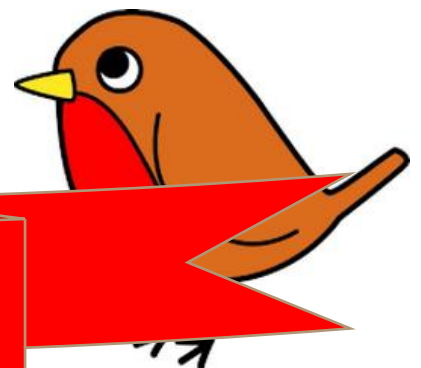
the Secretary of State for Education. A copy of our complaints procedure is available on request or by visiting the school website.

## Additional Information General Policies

The school has a publication scheme which provides details of all the information available from the school under the 'Freedom of Information Act 2000'. A copy of the publication scheme, along with all of our school policies, is available on the school website.



Faith is all around us.  
We have to have faith in ourselves in order to be the best that we can be.  
We are a small school, with big hearts  
and together we beat as one.  
Sowing seeds of knowledge and faith,  
with nurture and love,  
We thrive, we grow.



Be The Best We Can Be!

## CONTACT DETAILS

---

Wistow Parochial CE VC Primary School  
Church Hill  
Wistow  
Selby  
North Yorkshire  
YO8 3UU



**Telephone: 01757 268378**

**E-mail: [admin@wistow.n-yorks.sch.uk](mailto:admin@wistow.n-yorks.sch.uk)**

**Website: [www.wistowschool.co.uk](http://www.wistowschool.co.uk)**

**Facebook: [Wistow Parochial C of E Primary School](#)**

If there is any other information which you would like this booklet to contain, please let us know.

Please see our school website for statutory policy documents and other useful information relating to school policy and procedures or ask for a copy of our Publication Scheme.

We are incredibly proud of our school and we hope that information provided in this prospectus was useful.



Please visit our website and Facebook page for more information about us. Also take the time to read our Ofsted report and SIAMS Inspection report.

<https://reports.ofsted.gov.uk/provider/21/121596>

<https://www.churchofengland.org/sites/default/files/2025-01/siams-report-wistow-parochial-church-of-england-vc-primary-school-121596-041224.pdf>

*The information in this booklet was correct at the time of printing. No guarantee can be given that it will remain so over the coming year.*

